

ES/ER/TM-212

Relative Risk Ranking Evaluation for DOE Oak Ridge Operations

This document has been approved by the
K-25 Site Technical Information Office
for release to the public. Date: _____

This report has been reproduced directly from the best available copy.

Available to DOE and DOE contractors from the Office of Scientific and Technical Information, P.O. Box 62, Oak Ridge, TN 37831; prices available from 423-576-8401 (fax 423-576-2865).

Available to the public from the National Technical Information Service, U.S. Department of Commerce, 5285 Port Royal Rd., Springfield, VA 22161.

**Relative Risk Ranking Evaluation
for DOE Oak Ridge Operations**

K. M. Golden

Date Issued—October 1996

Prepared for the
U.S. Department of Energy
Office of Environmental Management
under budget and reporting code EW 20

LOCKHEED MARTIN ENERGY SYSTEMS, INC.
managing the
Environmental Management Activities at the
Oak Ridge K-25 Site Paducah Gaseous Diffusion Plant
Oak Ridge Y-12 Plant Portsmouth Gaseous Diffusion Plant
Oak Ridge National Laboratory
under contract DE-AC05-84OR21400
for the
U.S. DEPARTMENT OF ENERGY

PREFACE

The purpose of this report is to provide relative risk ranking scores for sites under the auspices of the U.S. Department of Energy Oak Ridge Operations, including the Oak Ridge Reservation and Paducah Gaseous Diffusion Plant. (Environmental Restoration personnel at Portsmouth Gaseous Diffusion Plant have previously conducted a relative risk ranking evaluation for the Portsmouth plant; their results are also presented in this report.) This work was conducted under Work Breakdown Structure 1.4.12.2.3.04.05.01 (Activity Data Sheet 8304). The information included in this report contains the list of release sites, the rank (low, medium, or high), the media used to determine the rank, and the receptor.

CONTENTS

PREFACE	ii
1. INTRODUCTION	1
2. METHOD	1
3. APPROACH	2
4. RESULTS	3
APPENDIX. RANKING RESULTS	8

FIGURES

1. Flow diagram of the relative ranking evaluation framework	4
2. Relative Ranking Evaluation Matrix	5
3. Relative ranking evaluation approach	6
4. Breakdown of ranking results	7

1. INTRODUCTION

The purpose of this report is to present the relative risk evaluation performed for the release sites at U.S. Department of Energy Oak Ridge Operations, including the Oak Ridge Reservation and Paducah Gaseous Diffusion Plant (Paducah, Kentucky). An evaluation of relative risk has previously been performed for Portsmouth Gaseous Diffusion Plant located in Piketon, Ohio, and the results are also included in this report. For purposes of this relative risk evaluation, the Environmental Restoration Risk Assessment Program has been tasked to assign a rank of High, Medium, or Low to each release site identified.

2. METHOD

The method used to complete the evaluation of release sites to determine a rank of High, Medium, or Low is from guidance provided by the U.S. Department of Energy Environmental Restoration Program (EM-40)¹. The EM-40 guidance is a modification of the Department of Defense *Relative Risk Site Evaluation Primer*, issued November 1995. Modifications were made to adapt to EM-40 remediation and decommissioning activities. A brief overview of the method is presented in this section.

The relative risk evaluation is a tool by which release sites can be grouped into High, Medium, or Low ranking categories and is accomplished by using three criteria: Source Hazard Factor, Pathway Factor, and Receptor Factor. The Source Hazard Factor is based upon a quantitative or qualitative evaluation of source contaminants, whereas the Pathway Factor and the Receptor Factor are based upon a qualitative evaluation of pathways and receptors via exposure to groundwater, surface water and sediment, soil, or facility. Figure 1 is a flow diagram that presents how the three factors are used to determine a final rank of High, Medium, or Low. For each release site, all media (or facilities) are evaluated using the three criteria noted previously in this paragraph. The specific risk rating is determined for each medium, and the highest medium rating is selected. The specific risk rating is determined from the three criteria using the Relative Ranking Evaluation Matrix (Fig. 2).

After the highest medium rating is selected, a four letter “rank code” is assigned to the release site. The first letter indicates whether the Source Hazard Factor is based upon data or is assumed. The letter “D” is used to indicate that data were available, whereas the letter “A” is used to indicate that an assumption concerning the source concentrations was made. A three-letter rating system is used to indicate Source Hazard Factor, Pathway Factor, and Receptor Factor ratings for the site: the Source Hazard Factor is either Significant (S), Moderate (M), or Minimal (N); the Pathway Factor is either Evident (E), Potential (P), or Confined (C); and the Receptor Factor is either Identified (I), Potential (P), or Limited (L).

3. APPROACH

This section outlines the general approach taken to complete the analysis of the release sites for the Oak Ridge Reservation and Paducah Gaseous Diffusion Plant. As mentioned previously, Portsmouth Environmental Restoration personnel performed their own evaluation (using the same method), and their

¹ Working Draft—December 29, 1995.

results have been incorporated for completeness. In this section, assumptions and specific issues will also be presented and discussed.

Figure 3 outlines the approach used to complete the evaluation for Oak Ridge. A team was developed consisting of personnel with expertise at each site to coordinate this task. One person had overall responsibility for the project to ensure and maintain consistency with the sites. Data gathering was the initial task performed. Primary sources of data included risk assessments [provided by Risk Assessment Program Risk Assessment Team Leaders], OREIS (Oak Ridge Environmental Information System), and other source documents (e.g., characterization reports, screening assessments, and hazard assessments). Secondary sources of data were obtained from the site Program Planning Managers. An initial data collection (phase I) effort ensued to determine data gaps. During this time, the Pathway Factor and Receptor Factor worksheets were being completed by either the Risk Assessment Team Leaders, Program Planning Managers, or site personnel with pertinent knowledge and expertise. If quantitative data were unavailable for a particular release site, a qualitative assessment was made concerning the source contaminants (either Significant, Moderate, or Minimal). For sites with quantitative data, the calculation of the Source Hazard Factors was automated in SAS[®] (Statistical Analysis System); the resulting data were reviewed for quality assurance.

When all three factors had been evaluated/completed for the release sites, the Relative Ranking Evaluation Matrix was applied to determine the ranking for each medium. The completed rankings were reviewed subsequently by the site Program Planning Managers.

ASSUMPTIONS

As recommended by EM-40 guidance, EPA Region IX preliminary remediation goals were used for the standard. If Region IX preliminary remediation goals were unavailable for specific chemicals, Oak Ridge Operations-specific preliminary remediation goals² were used. As stated in the EM-40 guidance, the most recent version of EPA Region IX preliminary remediation goals were used in this evaluation³. If appropriate data for decontamination and decommissioning facilities existed, the soil preliminary remediation goals were used to calculate the Source Hazard Factors; otherwise the reportable quantities listed in Appendix B of the EM-40 guidance were used.

In some cases (mostly at Oak Ridge National Laboratory), groundwater data were available for a release site, although the main pathway for exposure is via surface water (and surface water data were unavailable). To adequately evaluate these sites, the Source Hazard Factor for groundwater and the Pathway Factor and Receptor Factor for surface water were used in determining the final rank. The letter “A” for assumed was assigned to these release sites because it was assumed that the groundwater Source Hazard Factor applied to surface water. The qualifier of “assumed” was also assigned to sites if a qualitative evaluation of the source contaminants was made by site personnel. The qualifier “D” for data was assigned to sites if the Source Hazard Factor was assigned using analytical data or data concerning the site allowed a score to be assigned [e.g., if an evaluation (site assessment) of the release site stated that no risks were posed to human health or the environment].

² Preliminary Remediation Goals for Use in the U.S. Department of Energy Oak Ridge Operations Office. ES/ER/TM-106

³ Obtained electronically on April 26 (non-radionuclide PRGs) and April 30 (radionuclide PRGs), 1996 from EPA Region IX personnel.

In some cases with the Paducah release sites, data were unavailable to determine the Source Hazard Factor. To account for the lack of data, the ERBAM scores for public health and site personnel safety were used to determine the Source Hazard Factor. The public health scores were used to determine the Source Hazard Factor for groundwater and surface water/sediment, and the site personnel safety scores were used to determine the Source Hazard Factor for soil. The letter “A” for assumed was assigned to those sites indicating that data were unavailable for the Source Hazard Factor.

The EM-40 guidance states that the highest ranking for any medium (see Fig. 1) should be used for the release site score. In many cases, the different media rankings were the same. No guidance was provided on how to prioritize the media, so all media are reported as the final rank.

4. RESULTS

The final rankings for each installation (K-25, ORNL, Y-12, Off-site, Paducah, and Portsmouth) are presented in the appendix of this report. For a breakdown of results, refer to Fig. 4.

Fig. 1. Flow diagram of the relative ranking evaluation framework

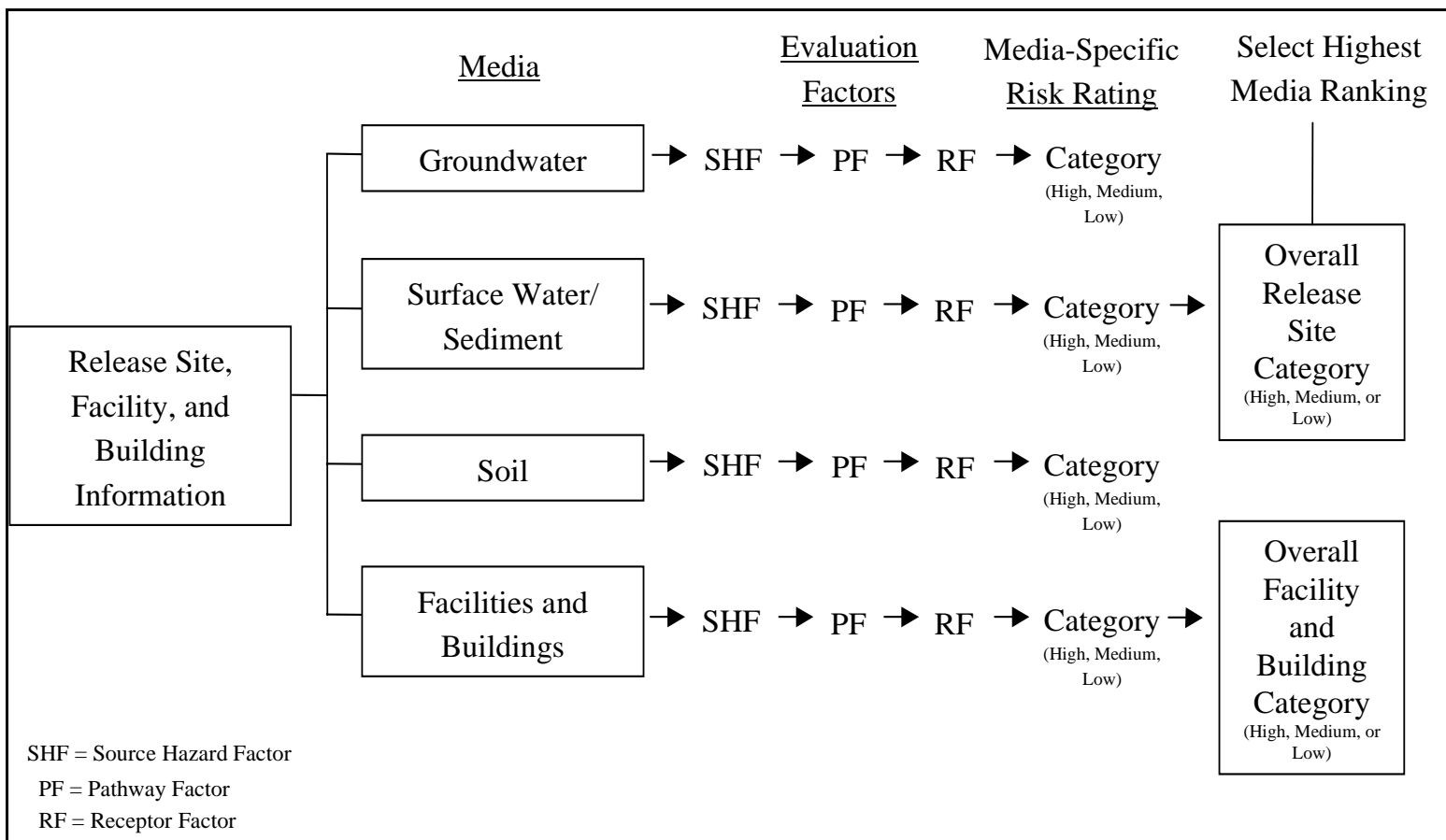


Fig. 2. Relative Ranking Evaluation Matrix

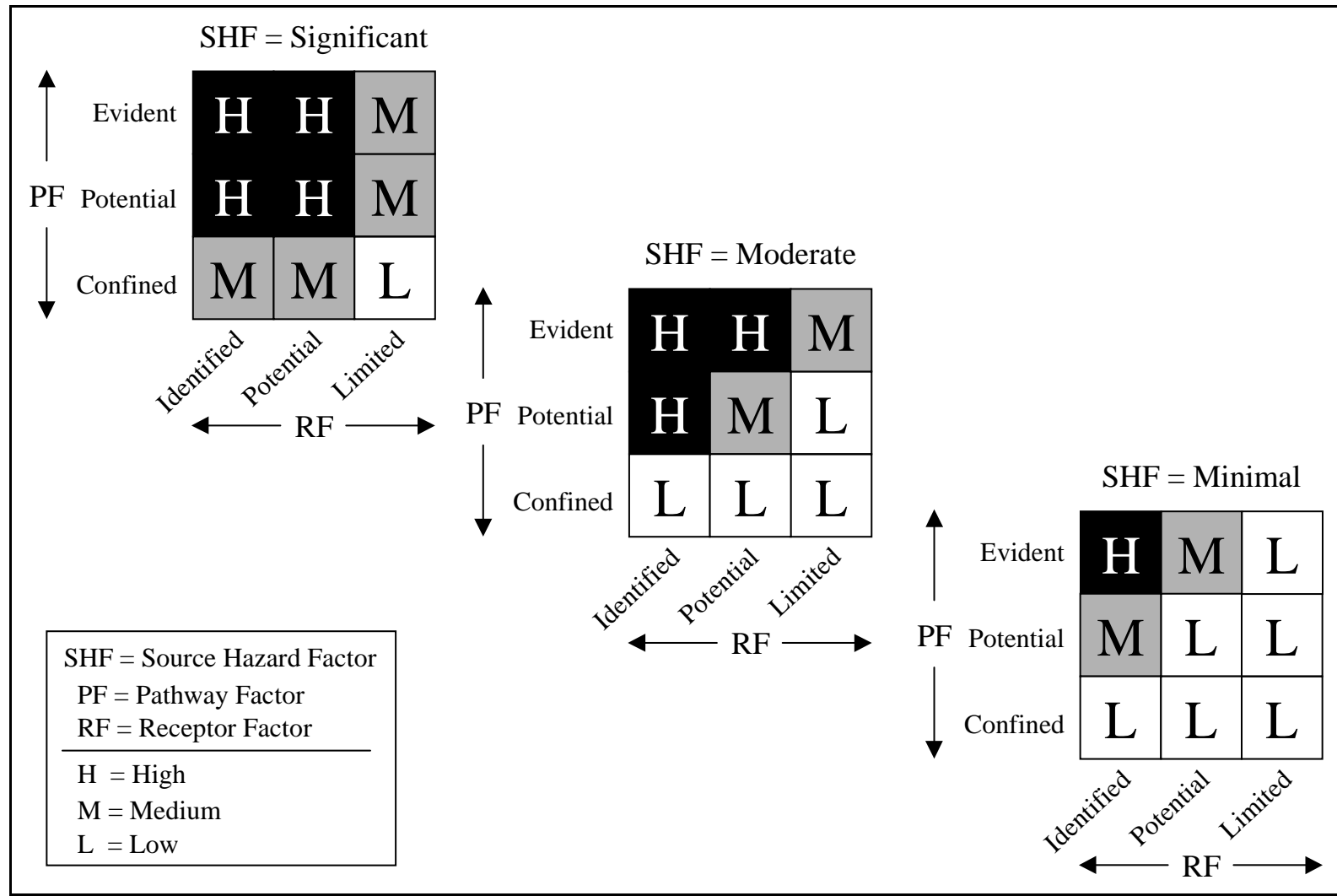
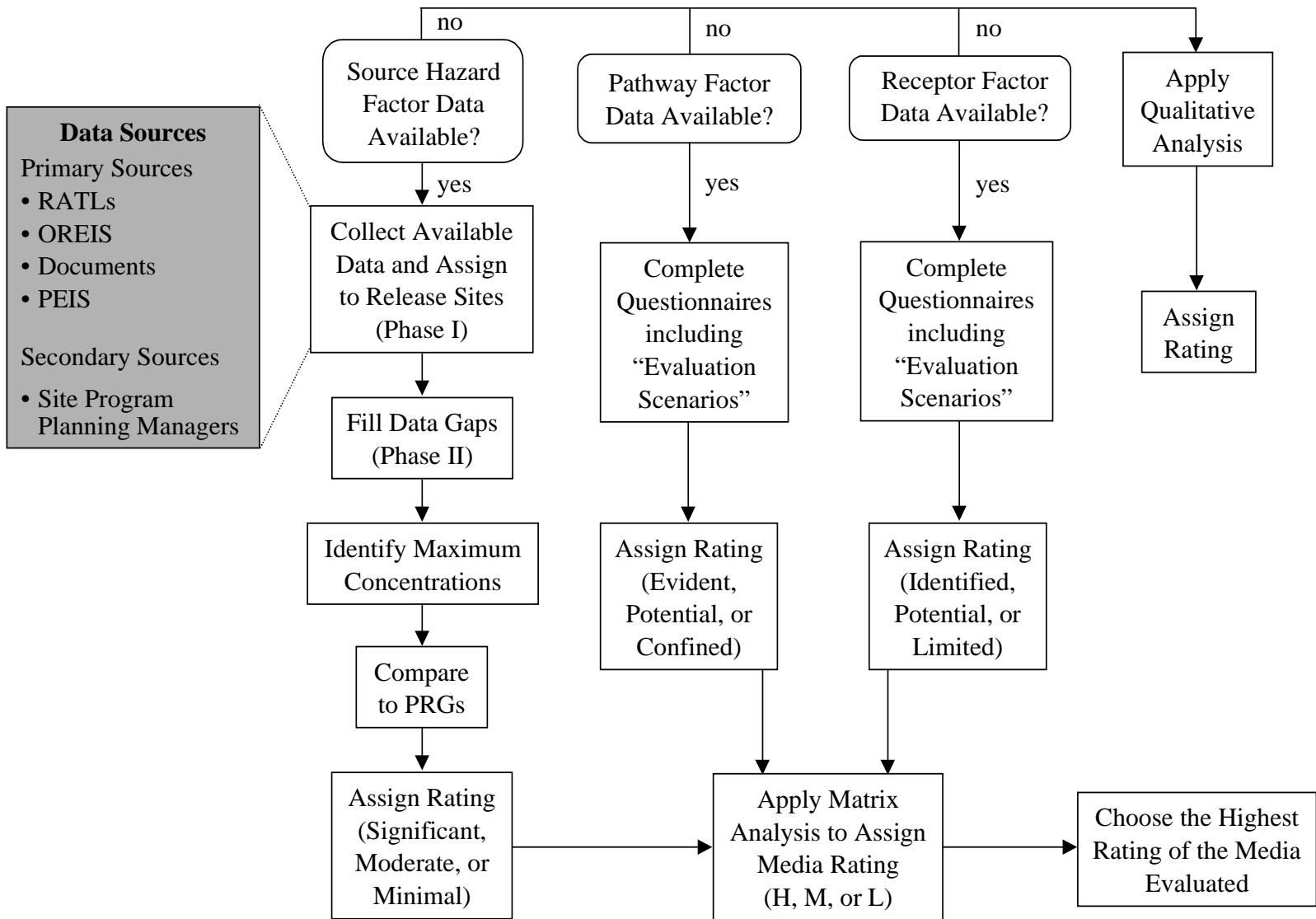


Fig. 3. Relative ranking evaluation approach



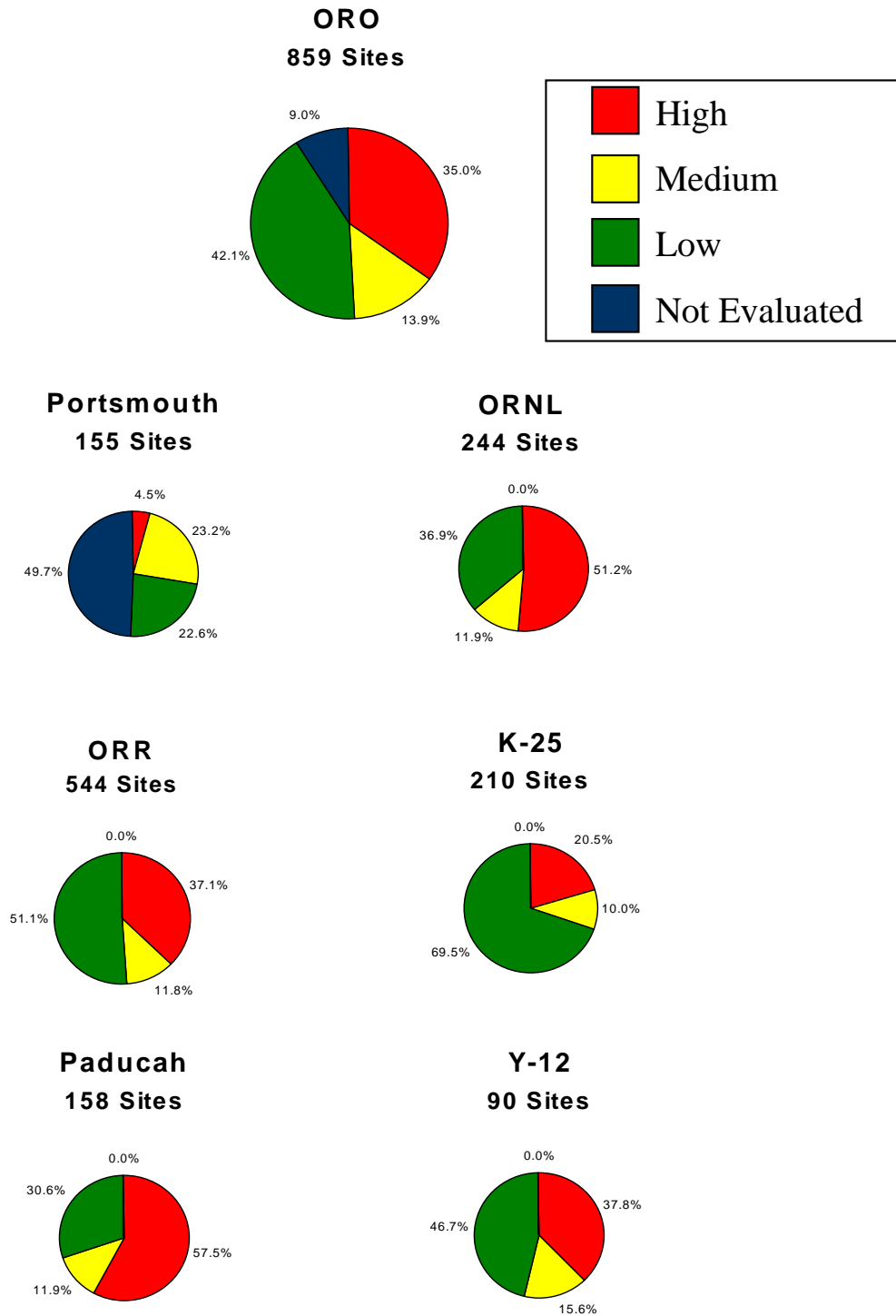


Fig. 4. Breakdown of ranking results

APPENDIX
RANKING RESULTS

K-25 Ranking Results

Site Code	RelSite_FacName	Rank Code	Final Rank	Media	Recept
ORKS	K-31 RECIRCULATING COOLING WATER LINES	DNCL	L	FB	W
ORKS	K-33 RECIRCULATING COOLING WATER LINES	DNCL	L	GW/SO	W
ORKS	K-300 AREA SERVICE STATION	DNCL	L	SO	W
ORKS	K-732 SWITCHYARD	DNCL	L	GW/SW/SO	W
ORKS	K-762 SWITCHYARD	DMCL/DMCL/DSCL	L	GW/SW/SO	W
ORKS	K-792 SWITCHYARD	DMCL/DMCL/DSCL	L	GW/SW/SO	W
ORKS	K-802 GASOLINE STORAGE TANK (UST)	DNCL	L	GW/SO	W
ORKS	K-901 SOUTH WASTE DISPOSAL AREA	DSCL	L	SO	W
ORKS	K-901-A NORTH DISPOSAL AREA	DSCP	M	SO	W
ORKS	518 MAIN SUBSTATION	DNCL	L	SO	W
ORKS	600 SERIES OIL STORAGE AREA	DNCL	L	GW/SW/SO	W
ORKS	695/687 OIL STORAGE OPERATIONS	DNCL	L	GW/SW/SO	W
ORKS	BLAIR ROAD ASPHALT PLANT	DNCL	L	SO	W
ORKS	BUILDING 523 GREASE (BURIAL SITE)	DNCL	L	GW/SO	W
ORKS	BUILDING 526 HEAVY EQUIPMENT SHOP	DNCL	L	GW/SO	W
ORKS	BUILDING 569 HEAVY EQUIPMENT SHOP	DNCL	L	GW/SO	W
ORKS	BUILDING 665 STEAM SHED	DNCL	L	FB	W
ORKS	BUILDING F-29 GASOLINE STATION	DNCL	L	GW/SO	W
ORKS	DUCT ISLAND ROAD	DSCL	L	GW/SO	W
ORKS	FLANNAGAN'S LOOP ROAD	DSCL	L	SO	W
ORKS	J.A. JONES CLEANING AREA	DNCL	L	FB	W
ORKS	J.A. JONES DISPOSAL AREA	DNCL	L	SO	W
ORKS	J.A. JONES MAINTENANCE COMPLEX	DNCL/DNPL	L	GW/SO	W
ORKS	K-304-5 ROAD SPILL AREA	DNCL	L	GW/SW/SO	W
ORKS	K-722 AREA ROADS (AREA LANDFARMING)	DNCL	L	SO	W
ORKS	K-1007 GAS TANK (RESIDUAL CONTAMINATION)	DNPL/DNCL	L	GW/SO	W
ORKS	K-1027 SERVICE STATION	DNCL	L	GW/SO	W
ORKS	K-1044 HEAVY EQUIPMENT REPAIR SHOP	DNCL	L	SO	W
ORKS	K-1045-A WASTE OIL BURNING PIT	DNPL/DNCL	L	GW/SO	W
ORKS	K-1047 MOTOR POOL REPAIR SHOP	DNCL	L	GW/SO	W
ORKS	K-1048 TIRE AND BATTERY SHOP	DNCL	L	SO	W
ORKS	K-1050 WASH, GREASES, AND PAINT SHOP	DNCL	L	GW/SO	W
ORKS	K-1055 GASOLINE/DIESEL STATION	DNCL	L	GW/SO	W
ORKS	K-1070-F CONSTRUCTION SPOIL AREA	DNCL/DSCL	L	GW/SO	W
ORKS	K-1085 OLD FIREHOUSE BURN AREA	DSPL	M	GW	W
ORKS	K-1098-C ASPHALT PLANT	DNCL	L	SO	W
ORKS	K-1099 BLAIR QUARRY	DSCL	L	SO	W
ORKS	K-1206-E SANDBLASTING RESIDUE	DNCL	L	SO	W
ORKS	K-1217 METALIZING SHOP	DNCL	L	SO	W
ORKS	K-1218 CODED CHEMICALS STORAGE FACILITY	DNCL	L	SO	W
ORKS	K-1236 PAINT SHOP	DNCL	L	GW/SO	W
ORKS	K-1407 CONTAMINATED DEBRIS	DSPL	M	SO	W
ORKS	K-1410 NEUTRALIZATION PIT	DSEP	H	SO	W
ORKS	K-25 SITE CONTRACTOR'S SPOIL AREA	DSCL	L	SO	W
ORKS	K-25 SITE NORTH TRASH SLOPE	DNCL	L	SO	W
ORKS	K-710 SLUDGE BEDS AND INHOFF TANKS	DSCL	L	SO	W

K-25 Ranking Results (continued)

Site Code	RelSite_FacName	Rank Code	Final Rank	Media	Recept
ORKS	K-770 CONTAMINATED DEBRIS	DSPP	H	SO	W
ORKS	K-770 SCRAP METAL YARD	DSPP	H	SO	W
ORKS	K-861 COOLING TOWER BASIN	DNCL/DSCL	L	GW/SO	W
ORKS	K-892-G COOLING TOWER BASIN	DNCL/DSCL	L	GW/SO	W
ORKS	K-892-H COOLING TOWER BASIN	DNCL/DSCL	L	GW/SO	W
ORKS	K-892-J COOLING TOWER BASIN	DNCL/DSCL	L	GW/SO	W
ORKS	K-895 CYLINDER DESTRUCT FACILITY	DSPL	M	SO	W
ORKS	K-901-A HOLDING POND	DSPP/DSPI	H	GW/SO	W
ORKS	POPLAR CREEK DISPOSAL AREA	DNCL	L	SO	W
ORKS	ROUND HOUSE ROAD	DNCL	L	SO	W
ORKS	S-21 HAPPY VALLEY SERVICE STATION	DNCL	L	GW/SO	W
ORKS	SOUTH PLANT AREA LAB DRAIN (LINES)	DNCL	L	SO	W
ORKS	T-17 LIGHT EQUIPMENT GARAGE	DNCL	L	GW/SO	W
ORKS	T-21 OIL/GREASE STATION	DNCL	L	SO	W
ORKS	T-27/T-5 PIPE WELDING SHOP	DNCL	L	GW/SO	W
ORKS	K-1407-B HOLDING POND	DSCL	L	GW	W
ORKS	K-1407-C RETENTION BASIN	DSCL	L	GW	W
ORKS	K-1417 DRUM STORAGE YARD (BLOCK CASTING/STORAGE AREA)	DSCL	L	SO	W
ORKS	BUILDING 1423 GREASE BURIAL (SITE)	DNCL	L	SO	W
ORKS	DEMOLITION MATERIALS PLACEMENT AREA	DNCL	L	SO	W
ORKS	F-05 LABORATORY BURIAL GROUND	DNEL/DNPP	L	GW/SO	W
ORKS	F-07 MATERIAL WAREHOUSE	DNCL	L	FB	W
ORKS	F-08 LABORATORY	DNCL	L	FB	W
ORKS	K-1004-J UNDERGROUND TANK	DMCL	L	SW	W
ORKS	K-1004-J VAULTS	DMCL	L	SO	W
ORKS	K-1004-L RECIRCULATING COOLING WATER LINES	DNCL/DSCL	L	GW/SO	W
ORKS	K-1007-P1 HOLDING PONDS	DSEI	H	SW	W
ORKS	K-1035 ACID PITS	DNCL	L	SO	W
ORKS	K-1035 GASOLINE STATION	DNCL	L	GW/SO	W
ORKS	K-1037 RECIRCULATING COOLING WATER LINES	DNCL/DNCP	L	GW/SO	W
ORKS	K-1064 DRUM STORAGE AND BURN AREA INCLUDES	DSPP	H	SO	W
ORKS	K-1064-G (DRUM DEHEADING FACILITY)	DSPP	H	SO	W
ORKS	K-1070-A LANDFARM	DSCP	M	SO	W
ORKS	K-1070-A OLD CONTAMINATED BURIAL GROUND	DSPI	H	SO	W
ORKS	K-1070-B OLD CLASSIFIED BURIAL GROUND	DSEP	H	SO	W
ORKS	K-1070-C/D CLASSIFIED BURIAL GROUND				
ORKS	K-1070 PITS AND K-1070 PAD	DSEP	H	GW/SO	W
ORKS	K-1070-D1, D2, AND D3 STORAGE DIKES	DNCL	L	SO	W
ORKS	K-1070-G BURIAL GROUND	DNCL/DSCL	L	GW/SO	W
ORKS	K-1131 NEUTRALIZATION PILE	DSPP	H	SO	W
ORKS	K-1210 RECIRCULATING COOLING WATER LINES	DNCL	L	GW/SO	W

K-25 Ranking Results (continued)

Site Code	RelSite_FacName	Rank Code	Final Rank	Media	Receipt
ORKS	K-1232 CHEMICAL RECOVERY FACILITY LAGOON	DSEP	H	GW	W
ORKS	K-1401 ACID LINE	DSEP	H	GW	W
ORKS	K-1401 DEGREASERS	DNBP	M	GW	W
ORKS	K-1407-C/K-1417 SOILS	DSPP	H	SO	W
ORKS	K-1413 PROCESS LINES	DSPL	M	GW	W
ORKS	K-1413 TREATMENT TANKS/PROCESS LINES	DSPL	M	GW	W
ORKS	K-1414 GARAGE DIESEL TANK	DSPL	M	GW	W
ORKS	K-1420 CONTAMINATED DRUM STORAGE	DSEP	H	GW	W
ORKS	K-1420 MERCURY RECOVERY ROOM	DNCL	L	FB	W
ORKS	K-1420 OIL DECONTAMINATION UNIT	DNCL	L	FB	W
ORKS	K-1420 PROCESS LINES	DSPL	M	SO	W
ORKS	K-1420 WASTE OIL STORAGE PAD	DSCL	L	SO	W
ORKS	K-1700 STREAM (MITCHELL BRANCH)	DSPP	H	GW	W
ORKS	K-27/29 RECIRCULATING COOLING WATER LINES	DNCL	L	GW/SO	W
ORKS	K-1004-J Centrifuge Development Laboratory	DNCL	L	FB	W
ORKS	K-1004-L Pilot Plant	DSPP	H	FB	W
ORKS	K-1004-N1 Cooling Tower	ANCL	L	FB	W
ORKS	K-1004-N2 Cooling Tower	ANCL	L	FB	W
ORKS	K-1004-Q Centrifuge Laboratory	DNCL	L	FB	W
ORKS	K-101 Compressor Laboratory (Research Building)	DMCI	L	FB	W
ORKS	K-1010 Laboratory, Receiving and Handling	DNPL	L	FB	W
ORKS	K-1023 Laboratory (Includes K-1009, 1050, 1005)	DNCL	L	FB	W
ORKS	K-1024 D&D Offices	DNCL	L	FB	W
ORKS	K-1024-B Storage Area	DNCL	L	FB	W
ORKS	K-1024-C Storage Area	DNCL	L	FB	W
ORKS	K-1024-D Storage Area	DNCL	L	FB	W
ORKS	K-1031-A Building (K-1031 Power & Utilities Storage Facility)	DSEP	H	FB	W
ORKS	K-1037 Barrier Plan (partial) [Industrial Research Facility]	DSPI	H	FB	W
ORKS	K-1037-C Smelter House	DSPI	H	FB	W
ORKS	K-1040 Maintenance Shop for K-633	DNEL	L	FB	W
ORKS	K-1045 Valve Shop	DNCL	L	FB	W
ORKS	K-1052 Advanced Machine Develop Laboratory	DNCL	L	FB	W
ORKS	K-1066-B Cylinder Storage Yard, Northeast K-1423	DSEP	H	FB	W
ORKS	K-1066-E Cylinder Storage Yard, North K-832	DSEP	H	FB	W
ORKS	K-1066-J Cylinder Storage Yard, North K-25	DSEP	H	FB	W
ORKS	K-1066-K Cylinder Storage Yard, West K-33	DSEP	H	FB	W
ORKS	K-1131 Feed and Tails (Building) Facility	DSEI	H	FB	W
ORKS	K-1132 Hydrogen Fluoride (HF) Storage	DNPP	L	FB	W
ORKS	K-1133 HF Storage	DNPP	L	FB	W
ORKS	K-1134 HF Storage Shed	DNPP	L	FB	W
ORKS	K-1135 HF Storage Control Room	DNPP	L	FB	W
ORKS	K-1200 Centrifuge South Bay	DNCL	L	FB	W
ORKS	K-1210-A Advanced Engineering Test Facility	DNCL	L	FB	W

K-25 Ranking Results (continued)

Site Code	RelSite_FacName	Rank Code	Final Rank	Media	Recept
ORKS	K-1220 CPF-2	DNCL	L	FB	W
ORKS	K-1220 Centrifuge Plant Demonstration Facility (CPDF)-1	DNCL	L	FB	W
ORKS	K-1231 Process Building (Facility)	DSPP	H	FB	W
ORKS	K-1231-A Propane Storage	DSPP	H	FB	W
ORKS	K-1231-B Caustic Storage Tank	DSPP	H	FB	W
ORKS	K-1233 Collection Facility	DMPP	M	FB	W
ORKS	K-1233-A Drum Cleaning	DMPP	M	FB	W
ORKS	K-1251 Barge Unloading Area	ANCL	L	FB	W
ORKS	K-1300 Stack (Brick Stack)	DNCL	L	FB	W
ORKS	K-1301 Fluorine Production Facility (Pump Storage Facility)	DSEI	H	FB	W
ORKS	K-1302 Fluorine Storage (Building)	DSEI	H	FB	W
ORKS	K-1303 Fluorine Facility (Research Compressor Facility)	DSEI	H	FB	W
ORKS	K-131 Maintenance (Feed Vaporization Building)	DSEP	H	FB	W
ORKS	K-1401-N Converter Re-tubing Area (Northeast)	ASPP	H	FB	W
ORKS	K-1401-NB Basement (Northwest)	ASPP	H	FB	W
ORKS	K-1413 Building (Laboratory Engineering)	DSEL	M	FB	W
ORKS	K-1420 Decontamination Facility (Decontamination & Uranium Recovery)	DMEP	H	FB	W
ORKS	K-1420-B Flammable Liquid Storage	DNEP	M	FB	W
ORKS	K-1420-C Gas Cylinder Storage	DNEP	M	FB	W
ORKS	K-1420-D Valve Sprinkler House	DNEP	M	FB	W
ORKS	K-1421 Incinerator (Low Level Waste Incinerator)	DSEL	M	FB	W
ORKS	K-1422 Storage House	DSEL	M	FB	W
ORKS	K-1501-E Coal Crusher and Unloading Station	DNCL	L	FB	W
ORKS	K-1600 Technology Test Facility	DNCP	L	FB	W
ORKS	K-25 Process Building	DSEI	H	FB	W
ORKS	K-27 Process Building	DSEI	H	FB	W
ORKS	K-29 Process Building	DSEI	H	FB	W
ORKS	K-300-C Coolant Storage Area	ANPP	L	FB	W
ORKS	K-300-C-1 Coolant Unloading Building	AMPP	M	FB	W
ORKS	K-300-C-2 Coolant Pump Building	ANPP	L	FB	W
ORKS	K-300-C-3 Coolant Drying System	ANPP	L	FB	W
ORKS	K-31 Process Building	DSEI	H	FB	W
ORKS	K-33 Process Building	DSEI	H	FB	W
ORKS	K-413 Product Withdrawal Facility	DSEL	M	FB	W
ORKS	K-631 Tails Storage (Process Tails)	DSEL	M	FB	W
ORKS	K-633-D Test Loop Storage	DNEL	L	FB	W
ORKS	K-704 Main Switch House	ANCL	L	FB	W
ORKS	K-724 Storage Building (Warehouse)	DSEI	H	FB	W
ORKS	K-725 Beryllium Building	DSEI	H	FB	W
ORKS	K-762 Valve Vaults 1&2	DNCL	L	FB	W
ORKS	K-797 Electrical Switch Gear Room for K-1004-J	DNCL	L	FB	W
ORKS	K-798 Electrical Switch Gear Room for K-1023	DNCL	L	FB	W

K-25 Ranking Results (continued)

Site Code	RelSite_FacName	Rank Code	Final Rank	Media	Recept
ORKS	K-801 Sample Station	DNCL	L	FB	W
ORKS	K-801-AA Valve Vault	DNCL	L	FB	W
ORKS	K-801-B Water Treatment Clarifier Tank	DNCL	L	FB	W
ORKS	K-801-BB Valve Vault	DNCL	L	FB	W
ORKS	K-832 Pumphouse (Recirculating Water Pump House)	DNCL	L	FB	W
ORKS	K-832-H Cooling Tower Structure	DNCL	L	FB	W
ORKS	K-833 Cooling Water Return Pumphouse	DNCL	L	FB	W
ORKS	K-896 Recycle Blowdown Facility	ANCL	L	FB	W
ORKS	K-896-A Clarifier Tank	ANCL	L	FB	W
ORKS	K-896-B Clarifier Tank	ANCL	L	FB	W
ORKS	Tielines (Outdoor Process Tielines)	DNCL	L	FB	W
ORKS	K-1004-N Cooling Tower	DNCL	L	FB	W
ORKS	K-1025-E Storage Building	DNCL	L	FB	W
ORKS	K-701 Boiler House & Fabrication Shop	DNCL	L	FB	W
ORKS	K-702 Turbine Room & Discharge	DNCL	L	FB	W
ORKS	K-703 Fabrication Shop, Bio Laboratory	DNCL	L	FB	W
ORKS	K-705 Crib House	DNCL	L	FB	W
ORKS	K-706 Pump House	DNCL	L	FB	W
ORKS	K-707 Auxiliary Switch House	DNCL	L	FB	W
ORKS	K-709 Switchyard	DNCL	L	FB	W
ORKS	K-712 Fairchild Switchgear Substation	DNCL	L	FB	W
ORKS	K-715 Water Treatment System	DNCL	L	FB	W
ORKS	K-734 Storage Building Breaker House	DNCL	L	FB	W
ORKS	K-735 Storage Building	DNCL	L	FB	W
ORKS	K-735-A Storage Building	DNCL	L	FB	W
ORKS	K-738 Chlorinator House	DNCL	L	FB	W
ORKS	K-740 Paint Storage Warehouse	ANCL	L	FB	W
ORKS	K-766 Sampling Storage Shed	DNCL	L	FB	W
ORKS	K-834 Valve House	DNCL	L	FB	W
ORKS	K-861-J/K-31 Cooling Tower	DNCL	L	FB	W
ORKS	K-861/K-31 Cooling Tower	DNCL	L	FB	W
ORKS	K-862[K-31 Recirculating Water Pumphouse Area] Pumphouse	DNCL	L	FB	W
ORKS	K-891 Raw Water Pumphouse	DNCL	L	FB	W
ORKS	K-892 Pumphouse Area	DNCL	L	FB	W
ORKS	K-892-G Cooling Tower, Structure Only	DNCL	L	FB	W
ORKS	K-892-H Cooling Tower, Structure Only	DNCL	L	FB	W
ORKS	K-892-J Cooling Tower, Structure Only	DNCL	L	FB	W
ORKS	K-1410 Plating Facility	DSEI	H	FB	W
ORKS	K-633 Test Loop Facility	DNEL	L	FB	W

ORNL Ranking Results

Site Code	RelSite_FacName	Rank Code	Rank	Media	Recept
ORNL	Scrap Metal Area (1562) (Closed)	H	AMEP	SS	P
ORNL	3001 Storage Canal [OGR]	H	ASPP/DSPI	SS/SO	P/W
ORNL	Abandoned Burn Pit	L	ANPP	GW/SS/SO	P/P/W
ORNL	Abandoned Sanitary Waste Pipeline and Septic Tank N of 7917	L	ANPL/ANPP/ANPP	GW/SS/SO	P/P/W
ORNL	Abandoned Underground Waste Oil Storage Tank 7002A	L	ANPP/ANPP/ANCL	GW/SS/SO	P/P/W
ORNL	Aircraft Reactor Experiment (ARE) Surface Impoundment	L	ANPL/ANPP/ANPP	GW/SS/SO	P/P/W
ORNL	ARE Contaminated Tool Storage	L	ANPL/ANPP/ANPP	GW/SS/SO	P/P/W
ORNL	Buried Scrap Metal Area	L	ANPP/ANPP/ANPP	GW/SS/SO	P/P/W
ORNL	C-14 Allocation in White Oak Trees	L	ANPP/ANPP/ANPP	GW/SS/SO	P/P/W
ORNL	C-14 Allocation In White Pine Trees	L	ANPP/ANPP/ANPP	GW/SS/SO	P/P/W
ORNL	C-14 Allocation in Woody Biomass Plantation Species	L	ANPL/ANPL/ANPL	GW/SS/SO	P/P/W
ORNL	C-14 Efflux In Yellow Poplar Stand	M	ASPL	GW	P
ORNL	C-14 Maintenance-Respiration Study	L	ANPL/ANPL/ANPL	GW/SS/SO	P/P/W
ORNL	C-14 Sucrose Inoculation of Oak and Pine Trees	L	ANPL/ANPL/ANPL	GW/SS/SO	P/P/W
ORNL	Ca 45 Tagged Soil and Vegetation	L	ANPP/ANPP/ANPP	GW/SS/SO	P/P/W
ORNL	Ca 45 Tagged Trees	L	ANPP/ANPP/ANPP	GW/SS/SO	P/P/W
ORNL	Ca-45 Tagged Forest	L	ANPL/ANPL/ANPL	GW/SS/SO	P/P/W
ORNL	Cesium-137 'Forest' Research Area (7759)	M	AMPP/AMPP/AMPP	GW/SS/SO	P/P/P
ORNL	Cesium-137 Contaminated Field (0800)	H	DSPP	SO	P
ORNL	Cesium-137 Erosion/Runoff Study Area (0807)	H	ASPP	SO	P
ORNL	Closed Contractors Landfill (7658)	L	ANPP/ANPP/ANPL	GW/SS/SO	P/P/W
ORNL	Co-60 and Mn-54 Animal Study	L	ANPP/ANPP/ANPP	GW/SS/SO	P/P/W
ORNL	Contaminated Surfaces & Soil from 1959 Explosion in Bldg. 3019 Cell	H	ASPP/DSPI	SS/SO	P/W
ORNL	Contamination at Base of 3019 Stack	H	ASPP/DSPI	SS/SO	P/W
ORNL	Contractor Spoils Area - Melton Valley, W-SW of 7900	L	ANPL/ANPP/ANPP	GW/SS/SO	P/P/W
ORNL	Contractor's Landfill (1554)	H	ASEP	SS	P
ORNL	Corehole 8	H	ASEP	SS	P
ORNL	Cr-51 Contaminated Grass Plots	L	ANPP/ANPP/ANPP	GW/SS/SO	P/P/W
ORNL	Cs-134 Contaminated Grasses	M	AMPP/AMPP/AMPP	GW/SS/SO	P/P/W
ORNL	Cs-134 Contaminated Lichens and Mosses	M	AMPP/AMPP/AMPP	GW/SS/SO	P/P/W
ORNL	Cs-134 Contaminated Oak Trees	L	ANPP/ANPP/ANPP	GW/SS/SO	P/P/W
ORNL	Cs-134 Contaminated Persimmon Tree	L	ANPP/ANPP/ANPP	GW/SS/SO	P/P/W
ORNL	Cs-134 Contaminated Pine And Oak Seedings	M	AMPP/AMPP/AMPP	GW/SS/SO	P/P/W
ORNL	Cs-134 Contaminated Soybean and Sorghum	M	AMPP/AMPP/AMPP	GW/SS/SO	P/P/W
ORNL	Cs-134 Tagged Tree	L	ANPP/ANPP/ANPP	GW/SS/SO	P/P/W
ORNL	Cs-137 Bagged Leaves Study	L	ANPP/ANPP/ANPP	GW/SS/SO	P/P/W
ORNL	Cs-137 Contaminated Forest Floor	L	ANPP/ANPP/ANPP	GW/SS/SO	P/P/W
ORNL	Cs-137 Contaminated Forest Understory	L	ANPP/ANPP/ANPP	GW/SS/SO	P/P/W
ORNL	Cs-137 Contaminated Meadow	M	AMPP/AMPP/AMPP	GW/SS/SO	P/P/W
ORNL	Cs-137, Co-60 Contaminated Forest Area	L	AMLL/AMLL/AMLL	GW/SS/SO	P/P/W

ORNL Ranking Results (continued)

Site Code	RelSite_FacName	Rank Code	Rank	Media	Recept
ORNL	Cs-137, Fe-59 Contaminated Animal Pens (McNew Hollow)	L	ANPP/ANPP/ANPP	GW/SS/SO	P/P/W
ORNL	Decommissioned Waste Holding Basin (3512)	H	DSPI	SO	W
ORNL	Drainage 1,2 in WAG 5	H	DSEP	SS	P
ORNL	Drainage 3 Next to WAG 5	H	DSEP	SS	P
ORNL	Emergency Waste Basin (7821)	L	ANPL/ANCP/ANPL	GW/SS/SO	P/P/W
ORNL	Environmental Restoration Program Of Office Trailer Site	L	ANPP	GW/SS/SO	P/P/W
ORNL	Equalization Basin (3524)	H	DSEI/ASPI	SS/SO	P/W
ORNL	Equipment Storage Area (7841)	L	ANPL/ANPP/ANCP	GW/SS/SO	P/P/W
ORNL	Explosive and Shock-Sensitive Waste Detonation Area	L	ANPP/ANPP/ANPP	GW/SS/SO	P/P/W
ORNL	Explosives Detonation Trench (7822A)	L	ANPL/ANCP/ANPL	GW/SS/SO	P/P/W
ORNL	Fission Product Development Laboratory (FPDL) Filter Pit (3517)	H	ASPP/DSPI	SS/SO	P/W
ORNL	Fission Product Pilot Plant (FPPP) Contaminated Soil	H	ASPP/DSPI	SS/SO	P/W
ORNL	Former Waste Pile Area (South of Non-Rad Waste Treatment Plant)	H	ASPP	SS	P
ORNL	FPDL LLLW Transfer Line	H	ASPP/DSPI	SS/SO	P/W
ORNL	H-3 Contaminated Trees	L	ANPP	GW/SS/SO	P/P/W
ORNL	HFIR Cooling Tower Surface Impoundment	H	ASPP/DSPP	SS/SO	W/W
ORNL	HFIR/TRU Waste Collection Basin (7905)	H	DSPP/ASPP	SS/SO	W/W
ORNL	HFIR/TRU Waste Collection Basin (7906)	H	DSPP/ASPP	SS/SO	W/W
ORNL	HFIR/TRU Waste Collection Basin (7907)	H	DSPP/ASPP	SS/SO	W/W
ORNL	HFIR/TRU Waste Collection Basin (7908)	M	AMEL/AMPP/DMPP	GW/SS/SO	P/W/W
ORNL	Hg-197 Tagged Stream	L	ANPP	GW/SS/SO	P/P/W
ORNL	Hg-203 Tagged Stream	L	ANPP	GW/SS/SO	P/P/W
ORNL	Homogeneous Reactor Experiment (HRE) Fuel	H	DSPP	SS	P
ORNL	HRE Pond (7556)	H	DSEP/ASPP	SS/SO	W/W
ORNL	Hydrofracture Experimental Site 1, Soil Contamination (HF-S1A)	H	ASEI/ASEI/ASEI	GW/SS/SO	P/P/W
ORNL	Hydrofracture Experiment Site 2 (HF-S2A)	H	ASPP/ASPP	SS/SO	P/W
ORNL	Hydrofracture Experimental Site 1 (HF-S1)	H	ASPP	GW	P
ORNL	Hydrofracture Experimental Site 2 (HF-S2)	H	ASPP	GW	P
ORNL	Hydrofracture Experimental Site 3	H	ASPP	GW	P
ORNL	Hydrofracture Experimental Site 4	H	ASPP	GW	P
ORNL	Inactive Filter House Seal Tank 3002-A	N/A - WASTE MANAGEMENT			
ORNL	Inactive LLLW Collection Tank 3001-B	M	DSCP	SO	W
ORNL	Inactive LLLW Collection Tank 3003-A	M	DSCP	SO	W
ORNL	Inactive LLLW Collection Tank 3004-B	M	DSCP	SO	W
ORNL	Inactive LLLW Collection Tank 3013	M	DSCP	SO	W
ORNL	Inactive LLLW Collection Tank 4501-P	N/A - WASTE MANAGEMENT			

ORNL Ranking Results (continued)

Site Code	RelSite_FacName	Rank Code	Rank	Media	Recept
ORNL	Inactive LLLW Collection Tank 7503A	H	ASPP/DSPP	SS/SO	P/W
ORNL	Inactive LLLW Collection Tank H-209	M	DSCP	SO	W
ORNL	Inactive LLLW Collection Tank LA-104 (F-104)	N/A - WASTE MANAGEMENT			
ORNL	Inactive LLLW Collection Tank S-424	N/A - WASTE MANAGEMENT			
ORNL	Inactive LLLW Collection Tank T-30	M	DSCP	SO	W
ORNL	Inactive LLLW Collection Tank W-12	N/A - WASTE MANAGEMENT			
ORNL	Inactive LLLW Collection Tank W-17	N/A - WASTE MANAGEMENT			
ORNL	Inactive LLLW Collection Tank W-18	N/A - WASTE MANAGEMENT			
ORNL	Inactive LLLW Collection Tank W-19	L	ANCL/ANCL/ANCP	GW/SS/SO	P/P/W
ORNL	Inactive LLLW Collection Tank W-11	N/A - WASTE MANAGEMENT			
ORNL	Inactive LLLW Collection Tank W-20	L	ANCL/ANCL/ANCP	GW/SS/SO	P/P/W
ORNL	Inactive LLLW Collection Tank WC-11	N/A - WASTE MANAGEMENT			
ORNL	Inactive LLLW Collection Tank WC-12	N/A - WASTE MANAGEMENT			
ORNL	Inactive LLLW Collection Tank WC-13	N/A - WASTE MANAGEMENT			
ORNL	Inactive LLLW Collection Tank WC-14	N/A - WASTE MANAGEMENT			
ORNL	Inactive LLLW Collection Tank WC-4	N/A - WASTE MANAGEMENT			
ORNL	Inactive LLLW Collection Tank WC-5	N/A - WASTE MANAGEMENT			

ORNL Ranking Results (continued)

Site Code	RelSite FacName	Rank Code	Rank	Media	Recept
ORNL	Inactive LLLW Collection Tank WC-6	N/A - WASTE MANAGEMENT			
ORNL	Inactive LLLW Collection Tank WC-8	N/A - WASTE MANAGEMENT			
ORNL	Inactive LLLW Collection/Storage Tank TH-1	M	DSCP	SO	W
ORNL	Inactive LLLW Collection/Storage Tank TH-2	M	DSCP	SO	W
ORNL	Inactive LLLW Collection/Storage Tank TH-3	H	ASPP	SS	P
ORNL	Inactive LLLW Collection/Storage Tank TH-4	H	ASPP	SS	P
ORNL	Inactive LLLW Collection/Storage Tank W-1	H	ASPP	SS	P
ORNL	Inactive LLLW Collection/Storage Tank W-10	H	ASPP	SS	P
ORNL	Inactive LLLW Collection/Storage Tank W-11	H	ASPP	SS	P
ORNL	Inactive LLLW Collection/Storage Tank W-13	H	ASPP	SS	P
ORNL	Inactive LLLW Collection/Storage Tank W-14	H	ASPP	SS	P
ORNL	Inactive LLLW Collection/Storage Tank W-15	H	ASPP	SS	P
ORNL	Inactive LLLW Collection/Storage Tank W-1A	H	ASPP	SS	P
ORNL	Inactive LLLW Collection/Storage Tank W-2	H	ASPP	SS	P
ORNL	Inactive LLLW Collection/Storage Tank W-3	H	ASPP	SS	P
ORNL	Inactive LLLW Collection/Storage Tank W-4	H	ASPP	SS	P
ORNL	Inactive LLLW Collection/Storage Tank W-5	H	ASPP	SS	P
ORNL	Inactive LLLW Collection/Storage Tank W-6	H	ASPP	SS	P
ORNL	Inactive LLLW Collection/Storage Tank W-7	H	ASPP	SS	P
ORNL	Inactive LLLW Collection/Storage Tank W-8	H	ASPP	SS	P
ORNL	Inactive LLLW Collection/Storage Tank W-9	H	ASPP	SS	P
ORNL	Inactive LLLW Collection/Storage Tank WC-1	M	DSCP	SO	W
ORNL	Inactive LLLW Collection/Storage Tank WC-15	M	DSCP	SO	W
ORNL	Inactive LLLW Collection/Storage Tank WC-17	M	DSCP	SO	W
ORNL	Inactive LLLW Tank T-14	N/A - WASTE MANAGEMENT			
ORNL	Inactive OHF Waste Storage Tank T-1	H	ASPP	SS	P
ORNL	Inactive OHF Waste Storage Tank T-2	H	ASPP	SS	P
ORNL	Inactive OHF Waste Storage Tank T-3	H	ASPP	SS	P
ORNL	Inactive OHF Waste Storage Tank T-4	H	ASPP	SS	P
ORNL	Inactive OHF Waste Storage Tank T-9	H	ASPP	SS	P
ORNL	Isotopes Ductwork/3110 Filter House	L	ANPP/ANPP/ANPP	GW/SS/SO	P/P/W
ORNL	Leak in Transfer Line from Decon Facility (7819) to Pit 1 (7805)	H	ASPP/ASPI/ASEI	GW/SS/SO	P/P/W
ORNL	LLLW Collection and Storage Tank (7560)	L	ANPL/ANCP/ANCP	GW/SS/SO	P/P/W
ORNL	LLLW Collection and Storage Tank (7562)	M	ASPL/ASCP/DSCP	GW/SS/SO	P/P/W
ORNL	LLLW Line from Valve Box to OHF	L	ANPL/ANPP/ANPL	GW/SS/SO	P/P/W
ORNL	LLLW Line Leak Site - Leak at Valve Pit North of Trench 7 (7818)	H	ASPP/DSEI	SS/SO	P/W

ORNL Ranking Results (continued)

Site Code	RelSite FacName	Rank Code	Rank	Media	Recept
ORNL	LLLW Line Leak Site - Line Between Pit 3 (7807) and Trench 6 (7810)	L	ANPL/ANPP/ANCP	GW/SS/SO	P/P/W
ORNL	LLLW Lines and Leak Site-BLDG. 7852	L	ANPL/ANPP/DNPL	GW/SS/SO	P/P/W
ORNL	LLLW Lines and Leak Site - OHF	H	ASPP	SS	P
ORNL	LLLW Lines and Leak Sites - Melton Valley Transfer Line	H	ASPP/DSPP	SS/SO	P/W
ORNL	LLLW Lines and Leak Sites - 7500 Area	H	ASPP/DSPP	SS/SO	P/W
ORNL	LLLW Lines and Leak Sites - 7920 Ditch Line	L	ANPL/ANPP/ANPP	GW/SS/SO	P/P/W
ORNL	LLLW Lines and Leak Sites - Abandoned Line, Central Avenue Area	H	ASPP/DSPI	SS/SO	P/W
ORNL	LLLW Lines and Leak Sites - Between Tanks W-5 and WC-19	H	ASPP/DSPI	SS/SO	P/W
ORNL	LLLW Lines and Leak Sites - Between Tanks WC-1 and W-5	H	ASPP/DSPI	SS/SO	P/W
ORNL	LLLW Lines and Leak Sites - Bldg. 3028	H	ASPP/DSPI	SS/SO	P/W
ORNL	LLLW Lines and Leak Sites - Bldg. 3092 Area	H	ASPP/DSPI	SS/SO	P/W
ORNL	LLLW Lines and Leak Sites - Bldg. 3503, Ground Contamination	H	ASPP/DSPI	SS/SO	P/W
ORNL	LLLW Lines and Leak Sites - Bldg. 3518, West	H	ASPP/DSPI	SS/SO	P/W
ORNL	LLLW Lines and Leak Sites - Bldg. 3525 to a Sump	H	ASPP/DSPI	SS/SO	P/W
ORNL	LLLW Lines and Leak Sites - Bldg. 4508, North	H	ASPP/DSPI	SS/SO	P/W
ORNL	LLLW Lines and Leak Sites - Bldg. 7920 and Melton Valley Pumping Station Area	L	ANPL/ANPP/ANPP	GW/SS/SO	P/P/W
ORNL	LLLW Lines and Leak Sites - East of Bldg. 2531	H	ASPP/DSPI	SS/SO	P/W
ORNL	LLLW Lines and Leak Sites - East of Bldg. 3020 [Stack]	H	ASPP/DSPI	SS/SO	P/W
ORNL	LLLW lines and Leak Sites - End of Trench 7 Access Rd (leak Site 2)	H	ASPP/ASEI	SS/SO	P/W
ORNL	LLLW Lines and Leak Sites - Gauging Station NW of Bldg 7852	H	ASPI/ASPI/DSEI	GW/SS/SO	P/P/W
ORNL	LLLW Lines and Leak Sites - General Isotopes Area (3037,3038,3034)	H	ASPP/DSPI	SS/SO	P/W
ORNL	LLLW Lines and Leak Sites - Lagoon Road and Melton Valley Drive	H	ASPP/DSPP	SS/SO	P/W
ORNL	LLLW Lines and Leak Sites - Melton Valley Dr at SWSA 5 Access Road	H	ASPP/DSPP	SS/SO	P/W
ORNL	LLLW Lines and Leak Sites - North of Bldg. 3019	H	ASPP/DSPI	SS/SO	P/W
ORNL	LLLW Lines and Leak Sites - NW of Solid Waste Storage Area 1 [SWSA 1]	H	ASPP/DSPI	SS/SO	P/W
ORNL	LLLW Lines and Leak Sites - Oak Ridge Research Reactor (ORR) Water Line [Bldg. 3085]	H	ASPP/ASPI	SS/SO	P/W
ORNL	LLLW Lines and Leak Sites - Pit 6 SE (Leak Site 1)	H	ASPP/ASPI/DSEI	GW/SS/SO	P/P/W
ORNL	LLLW Lines and Leak Sites - Sewer Near Bldg. 3500	H	ASPP/DSPI	SS/SO	P/W

ORNL Ranking Results (continued)

Site Code	RelSite_FacName	Rank Code	Rank	Media	Recept
ORNL	LLLW Lines and Leak Sites - SW Corner of Bldg. 3019	H	ASPP/DSPI	SS/SO	P/W
ORNL	LLLW Lines and Leak Sites - Underneath Bldg. 3047	H	ASPP/DSPI	SS/SO	P/W
ORNL	LLLW Lines and Leak Sites - Underneath Bldg. 3515	H	ASPP/DSPI	SS/SO	P/W
ORNL	LLLW Lines and Leak Sites - Underneath Building 3550	H	ASPP/DSPI	SS/SO	P/W
ORNL	LLLW Lines and Leak Sites - West of Bldg. 3082	H	ASPP/DSPI	SS/SO	P/W
ORNL	LLLW Lines and Leak Sites - West of Melton Valley Pumping Station	L	ANPL/ANPP/ANPP	GW/SS/SO	P/P/W
ORNL	LLW Line North of Lagoon Road (7800)	H	DSPP	SO	W
ORNL	LLW Lines and Leak Sites - Underneath Building 3026	H	ASPP/DSPI	SS/SO	P/W
ORNL	Low Intensity Test Reactor (LITR) Ponds (3085W)	H	ASPP/DSPI	SS/SO	P/W
ORNL	Low Level Liquid Waste (LLLW) Lines and Leak Sites - South of Bldg. 3020	H	ASPP/DSPI	SS/SO	P/W
ORNL	Mercury Contaminated Soil (3503)	H	ASPP	SS	P
ORNL	Mercury Contaminated Soil (4501)	H	ASPP	SS	P
ORNL	Mercury Contaminated Soil (4508)	H	ASPP	SS	P
ORNL	Mercury Contaminated Soil (Bldg. 3592)	H	ASPP/DMPI	SS/SO	P/W
ORNL	Molten Salt Reactor Experiment (MSRE) Storage Well	H	ASPP/DSPP	SS/SO	P/W
ORNL	Municipal Sewage Sludge Application Site (XF1226)	N/A - NFI APPROVED			
ORNL	Na-22 Contaminated Soil	L	ANPP/ANPP/ANPP	GW/SS/SO	P/P/W
ORNL	New HF Grout Sheets	H	ASPP	GW	P
ORNL	New Hydrofracture Facility (7860)	H	ASPP	GW	P
ORNL	OHF Grout Sheets (7852)	H	ASPP	GW	P
ORNL	Old Hydrofracture Facility (OHF) Pond (7852A)	H	DSPP	SS	P
ORNL	Old Landfill (NE edge of SWSA 5)	H	ASPP	SS	P
ORNL	ORNL Graphite Reactor (OGR) Storage Canal Contaminated Soil [Overflow] (3001/3019)	M	ANPI	SO	W
ORNL	ORNL WAG 1 Groundwater OU	H	DSEP/ASEP	GW/SS	P/P
ORNL	ORR Decay Tank Rupture Site (3087)	H	ASPP/DSPI	SS/SO	P/W
ORNL	Paint Solvents Storage Tank (7615)	L	ANPP/ANPP/ANCL	GW/SS/SO	P/P/W
ORNL	Pilot Pits 1, 2 (7811)	M	AMPP/AMPP/AMPP	GW/SS/SO	P/P/W
ORNL	Pit 1 (7805)	H	ASPP/DSPI/ASEI	GW/SS/SO	P/P/W
ORNL	Pit 2 (7806)	H	DSEI/DSEI/ASEI	GW/SS/SO	P/P/W
ORNL	Pit 3 (7807)	H	DSEI/DSEI/ASEI	GW/SS/SO	P/P/W
ORNL	Pit 4 (7808)	H	DSEI/DSEI/ASEI	GW/SS/SO	P/P/W
ORNL	Process Waste Basin (7711)	L	ANCL/ANCL/ANCL	GW/SS/SO	P/W/W
ORNL	Process Waste Pond (3539)	H	DSEI/ASPI	SS/SO	W/W
ORNL	Process Waste Pond (3540)	H	DSEI/ASPI	SS/SO	W/W
ORNL	Process Waste Sludge Basin (7835)	H	DSPP	SS	W
ORNL	PWSB Pipeline from PWSB to Process Waste	L	ANPL/ANPP/ANPL	GW/SS/SO	P/P/W

ORNL Ranking Results (continued)

Site Code	RelSite_FacName	Rank Code	Rank	Media	Recept
ORNL	Rb 86 Contaminated Plants	M	AMPP/AMPP/AMPP	GW/SS/SO	P/P/W
ORNL	Reactive Chemicals Disposal Area (7659B)	L	ANPP/ANPP/ANPP	GW/SS/SO	P/P/W
ORNL	Septic Tank - Building 7819	L	ANPL/ANPP/ANCP	GW/SS/SO	P/P/W
ORNL	Soil at HRE Decontamination Pad/Shed (7500)	H	DSPI	SO	W
ORNL	Soil Injection of Radioactive Gas (7659C)	L	ANPP/ANPP/ANPP	GW/SS/SO	P/P/W
ORNL	SWSA 1 (2624)	H	ASPP	SS	P
ORNL	SWSA 2 (4003)	H	ASPP	SS	P
ORNL	SWSA 3 (1001)	H	ASEP	SS	P
ORNL	SWSA 4 (7800)	H	DSEP/ASPP	SS/SO	P/W
ORNL	SWSA 6 (7822)	H	ASPP	SS	P
ORNL	SWSA 6 TVA Easement	H	DSEI	SO	W
ORNL	SWSA South 5 (7802)	H	ASPP	SS	P
ORNL	Tc-95m and I-131 Contaminated Pasture	L	ANPP/ANPP/ANPP	GW/SS/SO	P/P/W
ORNL	Tc-95m Contaminated Soil and Plants	L	ANPP/ANPP/ANPP	GW/SS/SO	P/P/W
ORNL	Tc-95m Uptake Studies	L	ANPP/ANPP/ANPP	GW/SS/SO	P/P/W
ORNL	Tc-99 and Np-237 Contaminated Soil Lysimeters	L	ANPP/ANPP/ANPP	GW/SS/SO	P/P/W
ORNL	Thorium Storage Wells	L	ANCP/ANPP/ANPL	GW/SS/SO	P/P/W
ORNL	Transfer Canal and Dissolver Pit (3505)	H	ASPP/DSPI	SS/SO	P/W
ORNL	Trash Area East of HRE Parking Lot	L	ANCL/ANCL/ANCP	GW/SS/SO	P/P/W
ORNL	Trench 5 (7809)	H	DSPP/ASPP	SS/SO	P/W
ORNL	Trench 6 (7810)	H	DSPP/ASEP	SS/SO	P/W
ORNL	Trench 7 (7811)	H	DSEI/DSPI	GW/SS	P/P
ORNL	Underground Exhaust Ducts 3001-3003	L	ANCL/ANCL/ANCL	GW/SS/SO	P/P/W
ORNL	WAG 1 White Oak Creek (WOC) Floodplain Soils and Sediments	H	DSEP/DSEP	SS/SO	W/W
ORNL	Waste Holding Basin (3513)	H	DSEI/ASPI	SS/SO	P/W
ORNL	Waste Oil Storage Tank (7002W)	L	ANPP/ANCI/ANCL	GW/SS/SO	P/P/W
ORNL	Waste Retention Basin (7613)	L	ANPP/ANPP/ANPP	GW/SS/SO	P/P/W
ORNL	Waste Valve Pit 7561	L	ANPP/ANPP/ANPP	GW/SS/SO	P/P/W
ORNL	West End Dump Site	L	ANPP/ANPP/ANPP	GW/SS/SO	P/P/W
ORNL	White Oak Creek	H	DSEP/DSEP/DSEI	GW/SS/SO	P/P/W
ORNL	White Oak Lake and Embayment (7846)	H	DSEI/ASEI	SS/SO	P/W
ORNL	White Wing Scrap Yard (XDO751)	H	ASEI	SS	P
ORNL	Zn-65 Tagged Red Oak Seedlings	L	ANPL/ANPL/ANPL	GW/SS/SO	P/P/W

Y-12 Ranking Results

Site Code	SMWU#	RelSite_FacName	Rank Code	Final Rank	Media	Recept
ORYP	YD-024	Bear Creek Burial Grounds	DSEP/DSPP/DSPP	H	GW/SW/ SO	P/W
ORYP	YD-024H	Hazardous Chemical Disposal Area & Boneyard-Burnyard	DSEP/DSEP/DSPP	H	GW/SW/ SO	P/W
ORYP	YD-101	Sanitary Landfill I	DMPP	M	SO	W
ORYP	YD-106	Rust Spoil Area	DMPP	M	SO	W
ORYP	YD-107	Spoil Area 1	DSCL	L	SO	W
ORYP	YS-050	Oil Landfarm Soils Containment Pad	DSCL	L	SO	W
ORYP	YS-051	DARA Solids Storage Facility	DSCL	L	SO	W
ORYP	YS-125	SY-200 Yard	DMCP	L	SO	W
ORYP	YT-004	S-3 Ponds	DSEP/DSEP	H	GW/SW	P
ORYP	YT-008	Oil Retention Pond No. 1	ASCL/ASCL	L	GW/SO	P/W
ORYP	YT-009	Oil Retention Pond No. 2	ASCL/ASCL	L	GW/SO	P/W
ORYP	YT-014	Oil Landfarm	DSPL	M	SO	W
ORYP	YT-044	S-3 Treatment Facility	AMCL	L	GW	P
ORYP	YD-023	CR OU-1 Security Pits	DSPP	H	GW	P
ORYP	YD-025	Chestnut Ridge Sediment Disposal Basin	DMCP/DMCP/DMCI	L	GW/SW/ SO	P/W
ORYP	YD-108	Rodgers Quarry {Lower McCoy Branch}	DMPP	M	GW	P
ORYP	YD-112	Filled Coal Ash Pond {McCoy Branch}	DSPP/DSEP/DSPP	H	GW/SW/ SO	P/W
ORYP	YD-100	Beta-4 Security Pits	DSPP	H	GW	P
ORYP	YD-103	S-2 Site	DSPP	H	GW	P
ORYP	YD-105	Ravine Disposal Site	DNPP/DNPP	L	GW/SW	P
ORYP	YD-115	Bldg. 9418-3 Uranium Vault	DMPP	M	GW	P
ORYP	YD-864	Scarboro Road Debris Burial	ANEI	H	SO	W
ORYP	YS-015	ACN Drum Yard	DNCP/DNCL	L	SW/SO	P/W
ORYP	YS-017	Bldg. 9409-5 Storage Facility	DNPP	L	SW	P
ORYP	YS-018	Salvage Yard Oil Storage	DSPP	H	GW	P
ORYP	YS-019	Garage Underground Storage Tanks	DMCP/DMCP	L	GW/SW	P
ORYP	YS-020	Salvage Yard Oil/Solvent Drum Storage Area	DSEP	H	GW	P
ORYP	YS-030	Interim Drum Yard	DMCP/DMCP	L	GW/SW	P
ORYP	YS-111	Salvage Yard Scrap Metal Storage Area	DSPP	H	GW	P
ORYP	YS-116	Third Street Soil Pile (Moved To Chestnut Ridge Disposal Basin)	ANCL	L	SO	W
ORYP	YS-117	Bldg. 81-10 Area	DSPL	M	GW	P
ORYP	YS-122	Roofing Waste Pile	DNPP/DNPP	L	GW/SW	P
ORYP	YS-124	Cooling Tower Basin 9409-3	DNCP	L	SW	P
ORYP	YS-127	Mercury Contaminated Areas	DSPP	H	GW/SW	P
ORYP	YS-128	Bldg. 9201-2 Transformer and Capacitor Storage Area	DMCP/DMCP	L	GW/SW	P
ORYP	YS-131	Mercury Contaminated Gully Soil Pile	ASPL	M	SO	W
ORYP	YS-200	Bldg. 9201-5 Tank 0074-U	DSPP	H	SW	P
ORYP	YS-204	Tank 2063-U	DSEP	H	GW	P
ORYP	YS-205	Bldg. 9766 Tank 2064-U	DMPP/DMPP	M	GW/SW	P
ORYP	YS-213	Tank 2105-u	DMCP	L	SW	P
ORYP	YS-214	Tank 2116-U	DNPP/DNPL	L	SW/SO	P/W
ORYP	YS-233	Bldg. 9204-4 Tank and Transfer Station Tank	DSPP/DSPP	H	GW/SW	P

Y-12 Ranking Results (continued)

Site Code	SMWU#	RelSite_FacName	Rank Code	Final Rank	Media	Recept
ORYP	YS-239	Tank (Building 9818 (10,000 gal tank of acid waste))	AMCL	L	SO	W
ORYP	YS-241	Tank (Building 9204-4)	DMCP/DMCP	L	GW/SW	P
ORYP	YS-242	Laundry Sump	DMPP/DMPP	M	GW/SW	P
ORYP	YS-245	Bldg. 9206 Underground Tank	DSPP	H	GW	P
ORYP	YS-322	Bldg. 9201-5 NE Yard	DMCP	L	SW	P
ORYP	YS-326	Bldg. 9202 East Pad	DSPP/DSPP	H	GW/SW	P
ORYP	YS-329	Bldg. 9204-2 West Yard	DSPP	H	SW	P
ORYP	YS-333	Bldg. 9215 West Pad	DMCP	L	SW	P
ORYP	YS-335	Bldg. 9401-3 East Yard	DMPP	M	GW	P
ORYP	YS-336	Bldg. 9404-11 West Yard	DMPP	M	SW	P
ORYP	YS-337	Bldg. 9620-2 West Yard (PCBs)	DMCP	L	SO	W
ORYP	YS-338	Bldg. 9712 NE Yard	DSEP	H	SW	P
ORYP	YS-339	Bldg. 9720-3 North Yard	DSPP	H	SW	P
ORYP	YS-340	Building 9720-6 North Polytank Station	DSPP	H	GW	P
ORYP	YS-341	Bldg. 9720-13 West Yard (Uranium Trash)	DNEP	M	SW	P
ORYP	YS-342	Bldg. 9744 North Dock	DNCP/DMCP	L	GW/SW	P
ORYP	YS-343	Bldg. 9206 SID 30/31 Polytank Station	DMCP	L	SW	P
ORYP	YS-400	Rust Construction Garage Area	DSEL	M	GW	P
ORYP	YS-510	Tank 2077-U	ANCL/ANCL/ANCL	L	GW/SW/ SO	P/W
ORYP	YS-515	Tank 2089-U	DNCP/DNCP	L	GW/SW	P
ORYP	YS-516	Tank 2090-U	ANCL/ANCL/ANCL	L	GW/SW/ SO	P/W
ORYP	YS-517	Tank 2091-U	ANCL/ANCL/ANCL	L	GW/SW/ SO	P/W
ORYP	YS-518	Tank 2092-U	ANCL/ANCL/ANCL	L	GW/SW/ SO	P/W
ORYP	YS-520	Tank 2284-U	DMCP	L	SW	P
ORYP	YT-001	Prencos Incinerator	DSPP	H	GW	P
ORYP	YT-003	Waste Machine Coolant Biodegradation Facility	DSEP/DSEP	H	GW/SW	P
ORYP	YT-010	New Hope Pond	DSEP	H	GW	P
ORYP	YT-109	Salvage Yard Drum Deheader	DSEP	H	GW	P
ORYP	YT-119	Development Incinerator	DNPP	L	SW	P
ORYP	YS-029	Building 9401-1 Old Stream Plant	DNPP/DNPP	L	GW/SW	P
ORYP	YP-501	Building 9401-1 Old Stream Plant	DMCP/DMCP	L	GW/SW	P
ORYP		Building 9766 Beryllium Contaminated Ducts	DSCP	M	FB	W
ORYP		Upper East Fork Poplar Creek RMPE (Rem. Merc. & Plt Efflu)	AMEP	H	GW	P
ORYP		Bear Creek Burial Grounds	AMCL	L	GW	P
ORYP	YT-012	Kerr Hollow Quarry		NFA		
ORYP	YS-209	Tank 2100-U	DSPP	H	SW	P
ORYP	YS-210	Tank 2101-U	DSPP	H	SW	P
ORYP	YS-212	Tank 2104-U	DSPP	H	SW	P
ORYP	YS-601	Abandoned Nitric Acid Pipeline		NFA		
ORYP	YS-334	Building 9401-2 Polytank/Tanker		NFA		

Y-12 Ranking Results (continued)

Site Code	SMWU#	RelSite_FacName	Rank Code	Final Rank	Media	Receipt
ORYP	YS-351	Building 9401-2 East Yard		NFA		
ORYP	YD-026	United Nuclear Landfill	DMPL	L	GW	P
ORYP	YS-042	Chestnut Ridge Borrow Area Waste Pile	DNPP	L	GW/SW/ SO	P/W
ORYP	YS-043	East Chestnut Ridge Waste Pile	DNPP	L	GW/SW/ SO	P/W
ORYP	YS-126	Temporary Storage Area	DNPP	L	GW/SW/ SO	P/W
ORYP	YT-118	Storm Sewer Sediment Disposal Basin	DNPP	L	GW/SW/ SO	P/W
ORYP		Bldg. 9201-4	DSPP	H	FB	W

Off-site Ranking Results

Site Code	RelSite_FacName	Rank Code	Final Rank	Media	Recept
OARR	David Witherspoon Inc.	ASPP	H	SO	W
OARR	Lower East Fork Poplar Creek OU (Operating Unit)	DSEI	H	GW	P
OARR	Watts Bar Reservoir	DMPI	H	SW	P
OARR	Swine Waste Lagoons		NFA		
OARR	WasteWater Treatment Facility (WWTF/U0021)	ASCL	L	GW	P
OARR	Clinch River/Poplar Creek	DSEI	H	SW	P
OARR	Animal Burial Site I		NFA		
OARR	Animal Burial Site II		NFA		
OARR	Animal Burial Site III		NFA		
OARR	Low Dose Rate Irradiation Facility		NFA		
OARR	Variable Dose Rate Irradiation Facility (VDRIF)		NFA		

Paducah Gaseous Diffusion Plant Ranking Results

Site Code	RelSite_FacName	Rank Code	Final Rank	Media	Recept
PGDP	C-747-C Oil Landfarm	DSEI/DSPI	H	GW/SO	P/W
PGDP	KPDES Outfall Ditch 013	DSPI	H	SW	P
PGDP	C-728 Clean Waste Oil Tank	DSEI	H	SO	W
PGDP	C-728 Motor Cleaning Facility	DMEI	H	SO	W
PGDP	C-540-A PCB Waste Staging Area	DSEI	H	SO	W
PGDP	C-541-A PCB Waste Staging Area	DSEI	H	SO	W
PGDP	Little Bayou Creek	DSEI	H	SW	P
PGDP	Big Bayou Creek	DMEI	H	SW	P
PGDP	C-340 PCB Transformer Spill Site	AMEI	H	SO	W
PGDP	C-611 PCB Spill Site	DNEI	H	SO	W
PGDP	C-540-A PCB Spill Site	DNEI	H	SO	W
PGDP	C-541-A PCB Spill Site	DMEI	H	SO	W
PGDP	C-747-A UF4 Drum Yard	ANPI	M	SO	W
PGDP	C-746-P Clean Scrapyard	AMPI	H	SO	W
PGDP	C-747-P Clean Scrapyard	ANPI	M	SO	W
PGDP	C-746-E Contaminated Scrapyard	ANPI	M	SO	W
PGDP	C-746-C Scrapyard	ANPI	M	SO	W
PGDP	Uranium Burial Ground	DSEI	H	GW	P
PGDP	C-747-A Burn Area	DSEI/DSPI/DSEI	H	GW/SW/SO	P/W
PGDP	C-747-A Burial Ground	ASPI/ASEI	H	SW/SO	P/W
PGDP	C-333 PCB Soil Contamination	AMPI	H	SO	W
PGDP	C-331 PCB Soil Contamination (West)	AMPI	H	SO	W
PGDP	C-331 PCB Soil Contamination (SE)	AMPI	H	SO	W
PGDP	C-333 PCB Soil Contamination (West)	DSCI	M	GW	P
PGDP	C-310 PCB Soil Contamination (West)	AMPI	H	SO	W
PGDP	C-745 Cylinder Yard and Spoils Area (PCB Soils)	AMPI	H	SO	W
PGDP	C-743-T01 Trailer Site (Soil Backfill)	AMPI	H	SO	W
PGDP	C-617-A Sanitary Water Line	AMPI	H	SO	W
PGDP	C-304 Bldg/HVAC Piping System (Soil Backfill)	AMPI	H	SO	W
PGDP	KPDES Outfall Ditch 047 Flume-soil Backfill	DMPI	H	SW	P
PGDP	Chilled-Water System Leak Site	AMCL	L	SO	W
PGDP	C-331 RCW Leaks NW Side	AMCL	L	SO	W
PGDP	C-331 RCW Leak East Side	AMCL	L	SO	W
PGDP	Outdoor Firing Range (WKWMA)	AMPI	H	SO	W
PGDP	Outdoor Firing Range (PGDP)	AMPI	H	SO	W
PGDP	NW Plume	DSEI	H	GW	P
PGDP	C-100 Trailer Complex Soil Contamination (E)	AMPI	H	SO	W
PGDP	C-726 Sand Blasting Facility	AMPI	H	SO	W
PGDP	C-410-D Area Soil Contamination	ANPI	M	SO	W
PGDP	NE Plume	DSEI	H	GW	P
PGDP	C-340 Hydraulic System	AMCI	L	SO	W
PGDP	Residential/Inert Landfill Borrow Area (Offsite)	DSPI/DSPI	H	GW/SO	P/W
PGDP	C-746-D Classified Scrapyard	DSPI/DMPI	H	GW/SO	P/W
PGDP	C-410-B HF Neutralization Lagoon	DMCI	L	SO	W
PGDP	C-40 Neutralization Tank	AMPI	H	SO	W
PGDP	C-405 Incinerator	ANPI	M	FB	W
PGDP	C-633 PCB Spill Site	ASPI	H	SO	W

Paducah Gaseous Diffusion Plant Ranking Results (continued)

Site Code	RelSite_FacName	Rank Code	Final Rank	Media	Recept
PGDP	C-632-B Sulfuric Acid Storage Tank	ANPI	M	SO	W
PGDP	C-531 Electrical Switchyard	AMPI	H	SO	W
PGDP	C-533 Electrical Switchyard	ASPI	H	SO	W
PGDP	C-633 Pumphouse and Cooling Tower	AMPI	H	GW	W
PGDP	C-635 Pumphouse and Cooling Tower	AMPI	H	GW	W
PGDP	C-745 Kellogg Bldg/Leaching Field	DMPI	H	SO	W
PGDP	Fire Training Area	DSPI	H	GW	P
PGDP	C-611 550 Gallon Gasoline UST	DMPI	H	SO	W
PGDP	C-611 50 Gallon Gasoline UST	DMPI	H	SO	W
PGDP	C-611 2000 Gallon Oil UST	DMPI	H	SO	W
PGDP	C-611 Unknown Size Grouted UST	DMPI	H	SO	W
PGDP	C-611 1000 Gallon Diesel/Gasoline Tank	DMPI	H	SO	W
PGDP	C-740 TCE Spill Site	DSPI	H	GW	P
PGDP	C-746-K Inactive Sanitary Landfill	DSEI/DSEI/DSPI	H	GW/SW/SO	P/W
PGDP	C-100 Southside Berm	AMPI	H	SO	W
PGDP	C-611-4 Horseshoe Lagoon	ANPI	M	SO	W
PGDP	C-611-W Sludge Lagoon	ASPI	H	SO	W
PGDP	C-611-Y Overflow Lagoon	ASPI	H	SO	W
PGDP	C-611-V Lagoon	ANPI	M	SO	W
PGDP	C-616-L Pipeline and Vault Soil Contamination	AMPI	H	SO	W
PGDP	C-720 Whiteroom Sump	ANPI	M	SO	W
PGDP	C-729 Acetylene Building Drain Pits	AMPI	H	SO	W
PGDP	C-750-D UST	AMCI	L	SO	W
PGDP	C-722 Acid Neutralization Tank	AMPI	H	SO	W
PGDP	C-720 Compressor Pit Water Storage Pit	AMPI	H	SO	W
PGDP	C-337-A Vaporizer	ANPI	M	FB	W
PGDP	C-535 Electrical Switchyard	ANPI	M	SO	W
PGDP	C-537 Electrical Switchyard	DSPI/DMPI	H	GW/SO	P/W
PGDP	C-637 Pumphouse and Cooling Tower	DSPI	H	GW	P
PGDP	C-720 Compressor Pit Water Storage Tank		NFA		
PGDP	C-601 Direct Spill	DMPI	H	SO	W
PGDP	C-746-A Inactive PCB Transformer Area	AMPI	H	SO	W
PGDP	C-746-A1 UST	AMCI	L	SO	W
PGDP	C-746-A2 UST	AMCI	L	SO	W
PGDP	McGrow UST	ANPI	M	GW	P
PGDP	C-710 Acid Interceptor Pit	AMCI	L	SO	W
PGDP	McGrow Millwright Shop	DMPI	H	SO	W
PGDP	McGrow Construction Facilities	DNPI	M	SO	W
PGDP	C-746-A Septic System	AMPI	H	GW	P
PGDP	C-712 Acid Neutralization Lagoon	AMPI	H	SO	W
PGDP	C-616-E Sludge Lagoon	ASPI/ASEI/ASPI	H	GW/SW/SO	P/W
PGDP	C-616-F Full Flow Lagoon	DMPI	H	SO	W
PGDP	C-616 Chromate Reduction Facility	ASPI/ASPI/ASPI	H	GW/SW/SO	P/W
PGDP	C-410-E HF Vent Surge Protection Tank	ANPI	M	SO	W
PGDP	Soil Spoils Area	AMPI	H	SO	W
PGDP	C-410-E HF Emergency Holding Pond	AMPI	H	SO	W

Paducah Gaseous Diffusion Plant Ranking Results (continued)

Site Code	RelSite_FacName	Rank Code	Final Rank	Media	Recept
PGDP	C-333-A Vaporizer (Inside C-335A)	ANPI	M	FB	W
PGDP	C-634-B Sulfuric Acid Storage Tank	ANPI	M	SO	W
PGDP	C-631 Pumphouse and Cooling Tower	AMPI	H	GW	W
PGDP	Fill Area Dirt from C-420 PCB Spill Site	DMPI	H	SO	W
PGDP	Rubble Pile 1	ANCI	L	SO	W
PGDP	Rubble Pile 2	ANCI	L	SO	W
PGDP	Rubble Pile 3	ANCI	L	SO	W
PGDP	Rubble Pile 4	ANCI	L	SO	W
PGDP	Rubble Pile 5	ANCI	L	SO	W
PGDP	Rubble Pile 6	ANCI	L	SO	W
PGDP	Rubble Pile 7	ANCI	L	SO	W
PGDP	Rubble Pile 8	ANCI	L	SO	W
PGDP	Rubble Pile 9	ANCI	L	SO	W
PGDP	Rubble Pile 10	ANCI	L	SO	W
PGDP	Rubble Pile 11	ANCI	L	SO	W
PGDP	Rubble Pile 12	ANCI	L	SO	W
PGDP	Rubble Pile 13	ANCI	L	SO	W
PGDP	Rubble Pile 14	ANCI	L	SO	W
PGDP	Rubble Pile 15	ANCI	L	SO	W
PGDP	Rubble Pile 16	ANCI	L	SO	W
PGDP	Rubble Pile 17	ANCI	L	SO	W
PGDP	Rubble Pile 18	ANCI	L	SO	W
PGDP	Rubble Pile 19	ANCI	L	SO	W
PGDP	Rubble Pile 20	ANCI	L	SO	W
PGDP	Rubble Pile 21	ANCI	L	SO	W
PGDP	Rubble Pile 22	ANCI	L	SO	W
PGDP	Rubble Pile 23	ANCI	L	SO	W
PGDP	Rubble Pile 24	ANCI	L	SO	W
PGDP	Rubble Pile 25	ANCI	L	SO	W
PGDP	Rubble Pile 26	ANCI	L	SO	W
PGDP	Rubble Pile 27	ANCI	L	SO	W
PGDP	Rubble Pile 40	ANCI	L	SO	W
PGDP	Rubble Pile 41	ANCI	L	SO	W
PGDP	Rubble Pile 42	ANCI	L	SO	W
PGDP	Rubble Pile 43	ANCI	L	SO	W
PGDP	Rubble Pile 44	ANCI	L	SO	W
PGDP	Rubble Pile 45	ANCI	L	SO	W
PGDP	Rubble Pile 46	ANCI	L	SO	W
PGDP	Rubble Pile	ANCI	L	SO	W
PGDP	Rubble Pile	ANCI	L	SO	W
PGDP	Rubble Pile	ANCI	L	SO	W
PGDP	Rubble Pile	ANCI	L	SO	W
PGDP	C-400 TCE Leak Site	DSEI/DSPI	H	GW/SO	P/W
PGDP	C-400 Water Discard System	ANPI	M	SO	W
PGDP	C-403 Neutralization Tank	DSPI/DMPI	H	GW/SO	P/W
PGDP	C-400 Technetium Storage Tank Area	DSPI/DMPI	H	GW/SO	P/W

Paducah Gaseous Diffusion Plant Ranking Results (continued)

Site Code	RelSite_FacName	Rank Code	Final Rank	Media	Recept
PGDP	C-420 PCB Spill Site	DMPI	H	SO	W
PGDP	UF6 Cylinder Drop Test Area	DSEI/DSPI	H	GW/SO	P/W
PGDP	C-400 Basement Sump	DMPI	H	SO	W
PGDP	C-617-A Lagoon	DSPI	H	GW	P
PGDP	Big Bayou Creek Monitoring Station	ASPI	H	SW	P
PGDP	Burial Grounds Onsite (RCRA-Capped UST)	ASPI	H	SW	P
PGDP	N-S Division Ditch (Outside)	DSEI	H	SW	P
PGDP	N-S Division Ditch (Inside)	DSEI	H	SW	P
PGDP	C-375-E2 Effluent Ditch (UPDES 002)	DSPI	H	SW	P
PGDP	C-375-E5 Effluent Ditch	DSPI	H	SW	P
PGDP	C-375-56 Southwest Ditch (KPDES 009)	DSPI	H	SW	P
PGDP	C-375-W7 Oil Skimmer Ditch	DSPI	H	SW	P
PGDP	C-375-E3 Effluent Ditch (UPDES 010)	DSPI/DSPI	H	GW/SW	P
PGDP	C-375-E4 Effluent Ditch (C-340)	DSPI	H	SW	P
PGDP	C-375-W8 Effluent Ditch	DSPI/DSPI	H	GW/SW	P
PGDP	C-375-W9 Effluent Ditch (KPDES 001)	DSPI	H	SW	P
PGDP	C-400 to C-404 Underground Transfer Line	DSEI/DMPI	H	GW/SO	P/W
PGDP	C-747 Contaminated Burial Ground	DSPI	H	SO	W
PGDP	C-746-F Classified Burial Ground	DSPI/DMPI	H	GW/SO	P/W
PGDP	C-747 Burial Ground	DSPI/DSPI/DSPI	H	GW/SW/SO	P/W
PGDP	C-340 Metal Plant	DMCP	L	FB	W
PGDP	C-410- Feed Plant	DSCL	L	FB	W

Portsmouth Gaseous Diffusion Plant Ranking Results

Site Code	Release Site	Rank Code	Rank	Media	Receptor
PORT	X-103 Auxiliary Office Building	DNPL/DNPP	Low	SO	P/W
PORT	X-104A Indoor Firing Range	DNPL/DNPP	Low	SO	P/W
PORT	X-120 Old Training Facility		Low	ALL	
PORT	X-230K South Holding Pond		Not Evaluated		
PORT	X-230K South Holding Pond Waste Pile	DNPL/DNPP	Low	SO	P/W
PORT	X-231A Southeast Oil Biodegradation Plot	DMPL/DMCL	Low	SO	P/W
PORT	X-231B Southwest Oil Biodegradation Plot		Not Evaluated		
PORT	X-300 Plant Control Facility		Not Evaluated		
PORT	X-600 Coal Fired Steam Plant; X-600A Coal Storage Yard; X-621 Coal-Pile Runoff Treatment Facility	DMPP	Medium	SS	P/W
PORT	X-626 Recirculating Cooling Water Pump House and Cooling Tower	DNPL/DNPP/ DMPL/DMPL/ DNPL/DNPP	Low	SS/GW/SO	P/W
PORT	X-710 Technical Services Building/Neutralization Pit		Not Evaluated		
PORT	X-741 Oil Drum Storage Facility	DNPL/DNPP	Low	SO	P/W
PORT	X-747F Miscellaneous Material Storage Yard	DMPL/DMPL/ /DNPL/DNPP	Low	GW/ SO	P/W
PORT	X-749 North Contaminated Materials Disposal Facility		Not Evaluated		
PORT	X-749 South Contaminated Materials Disposal Facility		Not Evaluated		
PORT	X-749 Contaminated Materials Disposal Facility/X-120 Groundwater Plume		High		
PORT	X-749A Classified Materials Burial Grounds		Not Evaluated		
PORT	X-750 Fuel Station		Not Evaluated		
PORT	X-751 Mobile Equipment Maintenance Shop		Not Evaluated		
PORT	X-760 Pilot Investigation Building	DNPL/DNPP	Low	SO	P/W
PORT	X-1007 Fire Station		Not Evaluated		
PORT	X-1020 Engineering Operations Center		Not Evaluated		
PORT	X-1107AV Interplant Portal (Vehicular)		Not Evaluated		
PORT	X-2230M Southwest Holding Pond	DMPP	Medium	SS	P/W
PORT	X-3000 Central Control Building		Not Evaluated		

Portsmouth Gaseous Diffusion Plant Ranking Results (continued)

Site Code	Release Site	Rank Code	Rank	Media	Receptor
PORT	X-3001 Process Building (GCEP) - Inactive		Not Evaluated		
PORT	X-3002 Process Building (GCEP) - Inactive		Not Evaluated		
PORT	X-3346 Feed and Withdrawal Facility - Inactive		Not Evaluated		
PORT	5-Unit Area Groundwater Plume	DSPP	High	GW	W
PORT	Big Run Creek	DMPP	Medium	SS	P/W
PORT	GCEP Underground Storage Tank		Not Evaluated		
PORT	Peter Kiewit Landfill/XT-847 Warehouse	DMPP/DMPP /DSPL/DSPL	Medium	GW	P/W
PORT	Quadrant I Sanitary Sewer System/X-614D Sewage Lift Station		Not Evaluated		
PORT	Quadrant I Storm Sewer System		Low		
PORT	X-100L Environmental Control Trailer		Not Evaluated		
PORT	X-101A Credit Union Trailer		Not Evaluated		
PORT	X-105 Electronic Maintenance Building		Not Evaluated		
PORT	X-109B Personnel Monitoring Building		Not Evaluated		
PORT	X-116 Storage Trailer		Not Evaluated		
PORT	X-230J1 East Environmental Sampling Building		Not Evaluated		
PORT	X-230J7 East Holding Pond and Oil Separation Basin	DMPP/DMPP	Medium	SS	P/W
PORT	X-343 Feed Vaporization and Sampling Facility		Not Evaluated		
PORT	X-345 Special Nuclear Material Storage Building		Not Evaluated		
PORT	X-633 Recirculating Water Pump House and Cooling Towers	DMPP/DMPP/ DSPL/DSPL	Medium	GW	P/W
PORT	X-640-2 Elevated Water Tank		Not Evaluated		
PORT	X-700 Chemical Cleaning Facility	DNPL/DNPP	Low	SO	P/W
PORT	X-700 Tank No. 6		Not Evaluated		
PORT	X-700 Tank No. 7		Not Evaluated		

Portsmouth Gaseous Diffusion Plant Ranking Results (continued)

Site Code	Release Site	Rank Code	Rank	Media	Receptor
PORT	X-700 Tank No. 8		Not Evaluated		
PORT	X-700 CT Chemical and Petroleum Storage Containment Tanks	DNPL/DNPP	Low	SO	P/W
PORT	X-700A Air Conditioning Equipment Building		Not Evaluated		
PORT	X-700T TCE/TCA Outside Storage Tank	DNPL/DNPP	Low	SO	P/W
PORT	X-701 BP Northeast Oil Biodegradation Plot	DNPL/DNPP	Low	SO	P/W
PORT	X-701A Lime House		Not Evaluated		
PORT	X-701B East and West Retention Basins		Not Evaluated		
PORT	X-701B Holding Pond		Medium		
PORT	X-701C Neutralization Pit	DNPL/DNPP	Low	SO	P/W
PORT	X-701D Water De-ionization Facility		Not Evaluated		
PORT	X-701E Neutralization Building		Not Evaluated		
PORT	X-701F Effluent Monitoring Building		Not Evaluated		
PORT	X-705 Decontamination Building	DNPL/DNPP	Low	SO	P/W
PORT	X-705A Radioactive Waste Incinerator/X-705B Contaminated Burnables Storage Log	DMPP	Medium	SO	W
PORT	X-705D Heating Booster Pump Building		Not Evaluated		
PORT	X-720 Maintenance Building	DMPL/DMPP	Low	SO	P/W
PORT	X-720 Neutralization Pit		Not Evaluated		
PORT	X-720A Maintenance Building Gas Manifold Shed		Not Evaluated		
PORT	X-720B Radio Base Station Building		Not Evaluated		
PORT	X-720C Paint and Oil Storage Building		Not Evaluated		
PORT	X-744 Retrievable Waste Storage Area	DNPL/DNPP	Low	SO	P/W
PORT	X-744G Bulk Storage Building	DSPP/DSPP	High	GW	P/W
PORT	X-744H Bulk Storage Building		Not Evaluated		
PORT	X-744J Bulk Storage Building		Not Evaluated		
PORT	X-744L Store and Maintenance Warehouse		Not Evaluated		

Portsmouth Gaseous Diffusion Plant Ranking Results (continued)

Site Code	Release Site	Rank Code	Rank	Media	Receptor
PORT	X-744Y Mixed Waste Storage Yard		Not Evaluated		
PORT	X-747A, B, C, D, and E Material Storage Yards		Not Evaluated		
PORT	X-747G Northeast Contaminated Material Storage Yard	DNPL/DNPP	Low	SO	P/W
PORT	7 Unit Investigative Area	DSPP/DSPP	High	GW	P/W
PORT	Barren Area	DNPP/DNPP	Low	SO	P/W
PORT	East Drainage Ditch	DMPP/DMPP	Medium	SO/SS	W
PORT	Little Beaver Creek	DMPP/DMPP	Medium	SO/SS	P/W
PORT	Process Waste Lines	DNPL/DNPP	Low	SO	P/W
PORT	Sanitary Sewer System and X-614P Northeast Sewage Lift Station		Not Evaluated		
PORT	Storm Sewer System (D & E)		Not Evaluated		
PORT	X-108E C-Portal		Not Evaluated		
PORT	X-109A Personnel Monitoring Building/Waste Oil Reclamation Facility		Not Evaluated		
PORT	X-111A Monitoring Portal and X-111B Portal Northwest		Not Evaluated		
PORT	X-230J3 West Environmental Sampling Building and Intermittent Containment Basin	DMPP / DSPL/DSPL / DMPP/DMPP	Medium	SO	P/W
PORT	X-230J5 West Holding Pond and Oil Separation Basin	DMPP/DMPP	Medium	SS	P/W
PORT	X-326 Process Building	DMPP/DMPP	Medium	GW	P/W
PORT	X-330 Process Building		Not Evaluated		
PORT	X-530 A-G Switchyard and Associated Buildings	DMPP/DMPP	Medium	GW	P/W
PORT	X-612 Elevated Water Tank		Not Evaluated		
PORT	X-615 Abandoned Sanitary Sewer Treatment Facility	DMPL/DMPP	Medium	SO	P/W
PORT	X-616 Effluent Control Facility/ Chromium Sludge Lagoons	DNCL/DNCL/ DNPP/DNPP	Low	GW	P/W
PORT	X-740 Waste Oil Handling Facility	DSPL/DSPL	Medium	GW	P/W
PORT	X-744N, X-744P, X-744Q Warehouse, and Associated Old Construction Headquarters Area	DMPP/DMPP	Medium	GW	P/W

Portsmouth Gaseous Diffusion Plant Ranking Results (continued)

Site Code	Release Site	Rank Code	Rank	Media	Receptor
PORT	X-744S, X-744T, X-744U Warehouses	DNPL/DNPP	Low	SO	P/W
PORT	X-745C West Cylinder Storage Yard	DMPP	Medium	SO	W
PORT	X-748 Truck Scales		Not Evaluated		
PORT	X-1107 DP, DV, EP, EV Northeast and Northwest Pedestrian and Vehicle Portals		Not Evaluated		
PORT	X-2207D Parking Lot/Cylinder Storage Yard A		Not Evaluated		
PORT	X-2230N West Holding Pond No. 2	DMPP/DMPP	Medium	SS	P/W
PORT	X-6619 Sewage Treatment Facility	DMPP/DMPP	Medium	GW	P/W
PORT	X-7725 Recycle Assembly Building, X-7745R, Recycle Assembly Storage Yard and Initial Construction Bulk Fuel Storage Area (BFS)	DMPP	Medium	SO	W
PORT	X-7725A Waste Accountability Facility (GCEP) and X-7727H Transfer Corridor (GCEP)		Not Evaluated		
PORT	X-7726 Centrifuge Training and Test Facility		Not Evaluated		
PORT	Don Marquis, Substation, Associated Containment Ponds, Drainage Ditches, and Construction Spoils	DSPP/DSPP	High	SS	P/W
PORT	OVEC Storage Area and Microwave Tower		Not Evaluated		
PORT	RCW System and Blowdown Line		Not Evaluated		
PORT	Sanitary Sewer System		Not Evaluated		
PORT	Storm Sewer System		Not Evaluated		
PORT	West Drainage Ditch	DMPP/DMPP	Medium	SS	P/W
PORT	X-108H Pike Avenue Portal		Not Evaluated		
PORT	X-114A Firing Range	DSPP/DSPP	High	SS	P/W
PORT	X-206H Parking Lot		Not Evaluated		
PORT	X-230J6 Northeast Holding Pond	DSPL/DSPL/ DMPP/DMPP	Medium	GW/SS	P/W
PORT	X-230J9 North Environmental Sampling Building		Not Evaluated		
PORT	X-230L North Holding Pond		Not Evaluated		
PORT	X-333 Process Building	DSPL/DSPL/ DMPP/DMPP/ DMPP	Medium	GW/SO	P/W

Portsmouth Gaseous Diffusion Plant Ranking Results (continued)

Site Code	Release Site	Rank Code	Rank	Media	Receptor
PORT	X-334 Transformer Storage and Cleaning Building	DNPL/DNPP	Low	SO	P/W
PORT	X-342A Feed Vaporization and Fluorine Generation Building, X-342B Fluorine Storage Building, and X-342C Waste HF Neutralization Pit	DMPP	Medium	SS	W
PORT	X-344A Settling Tank	DNPL/DNPP	Low	SO	P/W
PORT	X-344A/B/C Uranium Hexafluoride Sampling Facility		Medium		
PORT	X-344D HF Neutralization Pit		Medium		
PORT	X-344E Gas Ventilation Stack		Not Evaluated		
PORT	X-344F Safety Building		Not Evaluated		
PORT	X-533A-J Switchyard and Associated Buildings	DMPP/DMPP/DMPP	Medium	GW/SO	P/W
PORT	X-605H Booster Pump House and Appurtenances, X-605I Chlorinator Building, X-605J Diesel Generator Building		Not Evaluated		
PORT	X-611 Water Treatment Plant and Appurtenances		Not Evaluated		
PORT	X-611A Lime Sludge Lagoons	DMPP/DMPP/DMPP/DMPP	Medium	GW/SS	P/W
PORT	X-611B Sludge Lagoon		Not Evaluated		
PORT	X-618 North Holding Pond Storage Building		Not Evaluated		
PORT	X-630-1 Recirculating Water Pump House and X-630-2 A&B Cooling Towers	DMPL/DMPL/DNPL/DNPP	Low	GW/SO	P/W
PORT	X-630-3 Acid Handling Station	DMPL/DMPL/DNPL/DNPP	Low	GW/SO	P/W
PORT	X-640-1 Pump House and Associated Underground Diesel Storage Tanks		Not Evaluated		
PORT	X-734 Old Sanitary Landfill; X-734B Old Construction Spoils Landfill; X-734B Old Construction Spoils Landfill	DMPP/DMPP/DMPP/DMPP/DMPP/DMPP	Medium	GW/SS/SO	P/W
PORT	X-735 Sanitary Landfill (North)	DMPL/DMPL	Low	GW	P/W
PORT	X-735 Sanitary Landfill (South)	DMPL/DMPL	Low	GW	P/W
PORT	X-744B Salt Storage Building		Not Evaluated		
PORT	X-744W Surplus and Salvage Warehouse	DMPL/DMPL	Low	GW	P/W
PORT	X-745B Process Gas Yards	DMPP	Medium	SO	W
PORT	745E Process Gas Yards	DNPL/DNPP	Low	SO	P/W

Portsmouth Gaseous Diffusion Plant Ranking Results (continued)

Site Code	Release Site	Rank Code	Rank	Media	Receptor
PORT	745F Process Gas Yards	DMPP/DMPP	Medium	GW	P/W
PORT	X-747H Northwest Surplus and Scrap Yard	DMPP/DMPP	Medium	SO	P/W
PORT	X-752 Hazardous Waste Storage Facility	DMPP/DMPP	Medium	GW	P/W
PORT	Chemical and Petroleum Containment Basins	DNPL/DNPP	Low	SO	P/W
PORT	Mount Gilead Cemetery		Not Evaluated		
PORT	North Drainage Ditch and X-230L North Holding Pond	DMPP/DMPP /DMPP/DMPP	Medium	GW/SS	P/W
PORT	Northeast Drainage Ditch	DSPP/DSPP	High	SS	P/W
PORT	Old Northwest Firing Range	DNPP/DNPP	Low	SO	P/W
PORT	Railroad Spur Yard Storage Area	DMPP/DMPP	Medium	GW	P/W
PORT	Recirculating Cooling Water System		Low		
PORT	Sanitary Sewer System, X-614B Sewage Lift Station		Not Evaluated		
PORT	Storm Sewer System		Not Evaluated		
PORT	Transformer Cleaning/Storage Pad	DNPL/DNPP	Low	SO	P/W